



A world's leading manufacturer of power tools

- Double Insulation
- Variable Speed
- Reversing
- Built-in Job Light (DA3010F, DA3011F)

# 10 mm (3/8") Angle Drill

Model DA3010/ DA3010F/ DA3011/ DA3011F

*Highest Job efficiency in it's class.*



**NEW**



Model DA3010



Model DA3010F  
Built-in Job Light



Model DA3011



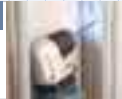
Model DA3011F  
Built-in Job Light

Only 66mm (2-5/8") in head height (DA3010/F)  
 Only 93mm (3-5/8") in head height (DA3011/F)

Only 23.5 mm (7/8") in center height

### LED Job light

LED Job light for lighting up the working point in shadow (Only DA3010F/ DA3011F)



### Powerful 450 W motor

PHOTO: DA3011F

1. Side handle can be installed

2. Variable switch with dial for obtaining your desiring speed.



Dial stopper for pre-setting your desiring speed.

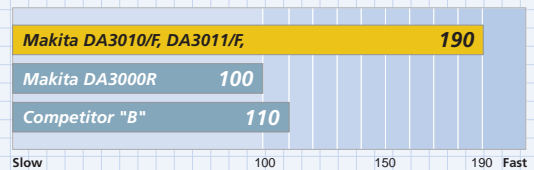
3. Push button type reverse switch

## Performance Data

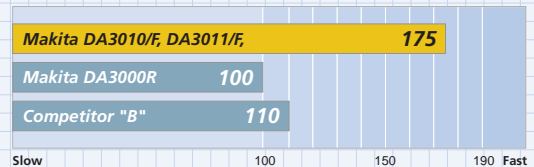
Note: It may differ under some conditions.

### Drilling speed

■ Work piece : Spruce (wood) with 38mm (1-1/2") in thickness  
 Drill bit Size : 21mm (13/16")



■ Work piece : Lauan (wood)  
 Size of screw to be fastened : Ø 4.1 x 38 mm (Ø 5/32" x 1-1/2")



Numbers in chart are relative values when setting competitor "MAKITA DA3000R" capacity as 100.

## Standard equipment

DA3010/ DA3010F	DA3011/ DA3011F
Chuck key S10	Grip 36 complete
Key holder 10	
Grip 36 complete	

Items of standard equipment may differ from country to country.

## Specifications

- Double Insulation
- Reversing
- Variable Speed
- Built-in Job Light (DA3010F, DA3011F)

Drilling capacities	
Steel	10 mm (3/8")
Wood	25 mm (1")
Continuous rating	
Input	450 W
No load speed	0 – 2,400 min <sup>-1</sup> (rpm)
Overall length	270 mm (10-5/8") (DA3010/F) 282 mm (11-1/8") (DA3011/F)
Net weight	1.4 kg (3.1 lbs)
Power supply cord	2.5 m (8.2 ft.)

Specifications may differ from country to country.

## Dimension

