

# Translation of the Original Operating Manual

## Bridge Saw – GS 350A-120



**Read operating manual before starting any work!  
Keep the operating manual for future use!**



Revision			
Date	Chapter	Reason of change	Person responsible
03-19		Recreation	Design
02-21	12.4.2	Wheel set changed	Design

Revision status: 2021-02  
Serial number:

© Gölz GmbH  
Dommersbach 51  
D- 53940 Hellenthal

Tel.: +49 (0)2482 – 12 200  
Fax: +49 (0)2482 – 12 222

E-Mail: [info@goelz.de](mailto:info@goelz.de)  
Internet: [www.goelz.de](http://www.goelz.de)

**1 Content**

<b>1 Content</b>	<b>4</b>
<b>2 General information</b>	<b>7</b>
2.1 Operating manual	7
2.2 Symbols, abbreviations, terms	7
2.3 Explanation of symbols	7
2.4 Limitation of liability	8
2.5 Customer Service	9
2.6 Copyright	9
<b>3 Safety</b>	<b>10</b>
3.1 Appropriate use	10
3.2 Reasonably foreseeable misuse	10
3.3 Responsibility of the operator	11
3.4 Responsibility of the staff	12
3.5 Personnel requirements	12
3.6 Personal protective equipment	13
3.7 Dangers	13
3.7.1 Risks from mechanical hazards	13
3.7.2 Risks from electrical hazards	14
3.7.3 Risks from thermal hazards	14
3.7.4 Risks due to specific physical agents	15
3.7.5 Risks from hazardous substances	15
3.7.6 Risks from working environment conditions	15
3.7.7 Risks due radiation hazards	15
3.8 Safety devices	15
3.9 Spare parts	16
3.10 Conduct in case of danger and accidents	16
3.11 Signage	17
<b>4 Technical data</b>	<b>19</b>
4.1 Dimension machine	19
4.2 Dimensions of cut material	19
4.3 Connection and motor values	19
4.4 Other data	19
4.5 Water pump	19
4.6 Laser	19
4.7 Noise emissions	19
4.8 Operating conditions	20
4.9 Cutting blades	20
4.10 Type plate	21
4.11 Requirements for the installation site	21
4.12 Storage requirements	21
<b>5 Design and function</b>	<b>22</b>
5.1 Scope of delivery and responsibilities	22
5.2 GS 350A-120	23
5.2.1 Functional description	24
<b>6 Transport &amp; Packaging</b>	<b>25</b>
6.1 Safety instructions for transport	25
6.2 Transport Inspection	25
6.3 Transport symbols	25
6.4 Transportation and storage	26
<b>7 Installation and initial commissioning</b>	<b>28</b>
7.1 Safety Instructions for Installation	28
7.2 Setting up	28

7.3	Connect.....	29
7.4	Initial commissioning and acceptance, general.....	29
7.4.1	Measures before initial commissioning.....	30
7.4.1.1	Mounting the cut-off wheel.....	30
7.4.1.2	Filling the water sump.....	30
<b>8</b>	<b>Operating.....</b>	<b>32</b>
8.1	Safety instructions for operation.....	32
8.2	Intended working position of the operator.....	32
8.3	Preparations for launch.....	33
8.4	Switch on.....	33
8.5	Cutting process.....	34
8.5.2	45°- bevel cuts.....	35
8.5.3	Water supply.....	36
8.6	Ending the cutting process.....	36
<b>9</b>	<b>Maintenance &amp; Cleaning.....</b>	<b>37</b>
9.1	Safety instructions for maintenance.....	37
9.2	Maintenance plan.....	37
9.3	Description of the maintenance work carried out by the operator.....	39
9.3.1	Changing the blade.....	39
9.3.2	Check the water connection.....	39
9.3.3	Water pump and water sump.....	39
9.4	Measures after maintenance.....	39
9.5	Note on components subject to wear and tear.....	40
<b>10</b>	<b>Faults.....</b>	<b>41</b>
10.1	Safety Instructions for Troubleshooting.....	41
10.2	Behaviour in case of disturbances.....	41
10.3	Fault table.....	42
10.4	Measures to be taken after the fault has been rectified.....	44
<b>11</b>	<b>Disassembly and disposal.....</b>	<b>45</b>
11.1	Safety instructions for disassembly and disposal.....	45
11.2	Disassembly.....	45
11.3	Disposal.....	45
<b>12</b>	<b>Spare parts list.....</b>	<b>47</b>
12.1	Use of the spare parts list.....	47
12.2	Sales offices.....	47
12.3	Exploded views and spare parts lists.....	49
12.3.1	Machine.....	49
12.3.2	Support leg cpl.....	50
12.3.3	Frame cpl.....	51
12.3.4	Water sump cpl.....	55
12.3.5	Guide bridge cpl.....	57
12.3.6	Cut material table steel-version cpl.....	61
12.3.7	Cut material table aluminium-version cpl.....	62
12.3.8	Cutting head mounting cpl.....	63
12.3.9	Cutting head cpl.....	65
12.3.10	Protection cover cpl.....	67
12.3.11	Transport wheel cpl.....	71
12.3.12	Tool holder with tool.....	72
12.3.13	Long handle.....	73
12.3.14	Stop bracket cpl.....	74
12.3.15	Transport handle cpl.....	75
12.3.16	Laser.....	76
12.3.17	Guide spindle.....	77
12.3.18	Eccentric spindle.....	78
12.3.19	Cutting head handle.....	79

**1 Content**

---

12.4	Optional accessories .....	80
12.4.1	Roll jib .....	80
12.4.2	Transport wheelset Support leg .....	81
12.4.3	Lateral jib .....	82
12.4.4	T-Lock tile clamping device .....	83
12.4.5	Tile stop .....	84
<b>13</b>	<b>Wiring diagram.....</b>	<b>85</b>
	<b>EU conformity declaration .....</b>	<b>86</b>

## 2 General information

### 2.1 Operating manual


These operating instructions provide all the information required for safe and efficient handling of the machine and form the basis for all actions performed on it. It is an integral part of the machine and must be kept in its immediate vicinity and accessible at all times to the personnel working on it.

A prerequisite for safe working on the machine is that all specified safety instructions and instructions for action are observed. The personnel must therefore have carefully read and understood this operating manual before starting any work.

In addition, the local accident prevention regulations and general safety regulations applicable at the place of use of the machine must be observed

### 2.2 Symbols, abbreviations, terms

This document uses signs, abbreviations and technical terms with the following meaning:

- ▶ See under
- Enumeration
- 1 Position number
- 1. Action step
- Text in italics* Comments on facts
-  Refers to a document contained in the documentation supplied. The place where the document was found is indicated in italics after the symbol.

### 2.3 Explanation of symbols

#### Warnings and safety instructions

Warnings and safety instructions in the manual are marked by pictograms and highlighted in a grey highlighted block.

Warning and safety instructions that draw attention to fundamental dangers are additionally introduced with signal words that express the extent of damage. These are structured as follows:

**SIGNAL WORD!**  
**Origin of the danger!**  
Consequences if the danger is not observed.  
- Code of conduct to avoid the danger

- ▶ Observe all warnings and safety instructions!
- ▶ Always act with caution when working to avoid accidents, personal injury and damage to property!

The pictograms in connection with the signal words mean



#### **DANGER!**

... indicates an imminent danger that will result in death or serious injury if not avoided.



#### **WARNING!**

... indicates a potentially hazardous situation which, if not avoided, could result in death or serious injury.

**CAUTION!**

... indicates a potentially hazardous situation which, if not avoided, may result in minor injuries.

**ATTENTION!**

... indicates a potentially hazardous situation which may result in damage to property if not avoided.

**Tips and recommendations****NOTE!**

... highlights tips, recommendations and information for efficient and trouble-free operation.

**Special safety instructions**

To point out special dangers, the following pictograms are used in conjunction with safety instructions:



... indicates hazards due to electric current.  
Non-observance of the safety instructions may result in serious or fatal injuries.



... indicates danger of crushing.  
If the safety instructions are not observed, there is a risk of serious injury on moving parts.



... indicates hazards from hot surfaces.  
If the safety instructions are not observed, there is a risk of burns and serious skin injuries due to heat.



... indicates hazards due to rotating cut-off wheels.  
If the safety instructions are not observed, there is a risk of cuts and serious skin injuries from rotating cutting discs.

**2.4 Limitation of liability**

All information and notes in these instructions have been compiled taking into account applicable standards and regulations, the state of the art and our many years of knowledge and experience.

The manufacturer assumes no liability for damages due to:

- ▶ Non-compliance with the instructions
- ▶ Unintended use
- ▶ Use of untrained and uninformed personnel
- ▶ Arbitrary conversions
- ▶ Technical changes
- ▶ Use of non-approved spare parts



The obligations agreed in the supply contract, the General Terms and Conditions of Business as well as the manufacturer's terms of delivery and the legal regulations valid at the time of conclusion of the contract shall apply.

**Warranty**

The manufacturer guarantees the functionality of the applied process technology and the stated performance parameters.

The warranty period begins with the defect-free handover.

**Wearing parts**

Wearing parts are all components that are in direct contact with the material to be treated or processed during proper operation. These components are excluded from warranty and defect claims, as far as they are operational wear and tear.

**Service life guarantee**

A service life guarantee is given for wear parts for a period of 6 months after acceptance without defects.

**Warranty conditions**

12 months after delivery on mechanical and electrical components for single-shift operation, excluding wear parts and tools.

The warranty claim expires if the system is not installed and started up by our specialists.

The warranty extends to the parts to be replaced. Consequential damages are excluded.

Also excluded are damages caused by natural wear and tear, defective or improper maintenance, disregard of operating instructions, excessive strain and use of unsuitable equipment.

## 2.5 Customer Service

Our customer service is available for technical information.

**Service-Hotline**  
**02482 – 12 200**

Information about the regionally responsible contact person can be obtained by telephone and is available at any time by fax, e-mail or via the Internet.

In addition, our employees are always interested in new information and experience that results from the application and can be valuable for the improvement of our products.

## 2.6 Copyright

This document is protected by copyright. Unauthorized transfer of the manual to third parties, duplication in any form or manner, even in part, as well as the use and/or communication of the contents are not permitted without the written permission of the publisher.

Contraventions obligate to compensation for damages. Further claims are reserved.

**3 Safety**

This section provides an overview of all safety aspects for the protection of the operator and user from possible dangers and the safe and trouble-free operation of the system.

Non-observance of the listed instructions, warnings and safety instructions can result in considerable dangers.

**3.1 Appropriate use**

The bridge saw GS350A-120 is intended exclusively for the following commercial use:

**The Bridgesaw GS350A-120**

- is designed for wet cutting of solid building materials, such as clinker, bricks, concrete products, refractory, natural and artificial stone products, tiles and ceramics.

**WARNING!  
Danger due to improper use!**

Any use of the machine other than the intended use can lead to dangerous situations.

- Only use the machine for its intended purpose in accordance with the information in this document, in particular in compliance with the application limits specified in the technical data.
- Do not use the machine for any other purpose or in any other way.
- Do not modify, convert or change the design or individual parts of the equipment with the aim of changing the area of application or the usability of the machine.

- ▶ Claims of any kind for damage resulting from improper use are excluded.
- ▶ The operator alone is liable for all damage caused by improper use.

**3.2 Reasonably foreseeable misuse****WARNING!  
Risk of injury through misuse!**

Misuse of the machine can lead to dangerous situations for persons and cause serious damage to property.

- Do not misuse the machine.

Any use of the machine beyond its intended use is considered improper and is prohibited.

This applies in particular to:

- the separation of non-approved building materials, e.g. wood, metal, plastic
- the separation of any materials other than those listed
- cutting without or with opened cut-off wheel protective cover
- cutting without water
- cutting of the material to be cut using the pendulum cutting method (vertical immersion from above into the material to be cut)

### 3.3 Responsibility of the operator

#### **Operator**

The operator is any natural or legal person who uses the machine or allows third parties to use it and is responsible for the safety of the user, personnel or third parties during use.

#### **Obligations of the operator**

The machine is used in the commercial sector. The operator of the machine is therefore subject to the legal obligations for occupational safety.

In addition to the warning and safety instructions in this manual, the safety, accident prevention and environmental protection regulations valid for the area of application of the machine must be observed.

#### **In particular, the operator must:**

- ▶ inform themselves about the applicable occupational health and safety regulations.
- ▶ identify possible additional hazards through a risk assessment, which are special application conditions at the place of use of the machine.
- ▶ operating instructions implement the necessary behaviour requirements for the operation of the machine at the place of use.
- ▶ regularly check during the entire period of use of the machine whether the operating instructions issued by him correspond to the current status of the regulations.
- ▶ adapt the operating instructions, if necessary, to new regulations, standards and operating conditions
- ▶ clearly and unambiguously define the responsibilities for the installation, operation, maintenance and cleaning of the machine
- ▶ Ensure that all employees working on the machine have read and understood the operating instructions. In addition, he must train the personnel at regular intervals in the use of the machine and inform them about the possible dangers.
- ▶ provide the personnel responsible for working on the machine with the prescribed and recommended protective equipment

Furthermore, the operator is responsible for ensuring that the machine

- ▶ is always in a technically perfect condition.
- ▶ is maintained in accordance with the specified maintenance intervals.
- ▶ all safety devices of the machine are regularly checked for completeness and functionality.

### 3.4 Responsibility of the staff

The machine is in commercial use. The personnel is therefore subject to the legal obligations for occupational safety.

In addition to the warning and safety instructions in this manual, the safety, accident prevention and environmental protection regulations valid for the area of application must be observed.

In particular, the personnel:

- ▶ is informed about the applicable occupational health and safety regulations.
- ▶ complies with the behaviour requirements laid down in the operating instructions for the operation of the machine on site.
- ▶ properly carries out the assigned responsibilities for the operation, maintenance and cleaning of the machine
- ▶ must have read and understood the operating instructions completely before starting work.
- ▶ uses the prescribed and recommended protective equipment

Furthermore, each employee working on the machine is responsible, within his scope of responsibility, for ensuring that the machine

- ▶ is always in technically perfect condition.
- ▶ is maintained according to specified maintenance intervals.
- ▶ all safety devices are regularly checked for completeness and functionality.

### 3.5 Personnel requirements

#### Basic information

Any work on the machine may only be carried out by persons who are able to carry out their work properly and reliably and who comply with the respective specified requirements.

- ▶ Persons whose reactions are affected, e.g. by drugs, alcohol or medication, must not carry out any work.
- ▶ When employing personnel, always observe the age and occupation-specific regulations applicable at the place of use.

#### Qualification



**WARNING!**  
**Risk of injury due to insufficient qualification!**

Improper work can lead to considerable personal injury and damage to property.

- All activities may only be performed by persons who have the necessary training, knowledge and experience.

#### Instructed personnel

Instructed personnel are persons who have been informed in detail and verifiably by the operator about the tasks assigned to them and possible dangers.

#### Technical staff

Qualified personnel are deemed to be those who, on the basis of their professional training, knowledge and experience as well as knowledge of the relevant regulations, are able to carry out the assigned work properly, recognise possible dangers independently and avoid personal injury or damage to property.

#### Qualified electrical personnel

All work on the electrical equipment may only be carried out by qualified electricians.

Qualified electricians are persons who, due to their technical training, knowledge and experience as well as their knowledge of the relevant regulations, are able to carry out work on electrical equipment properly, to recognize possible dangers independently and to avoid personal injury and damage to property caused by electric current.

## Unauthorized persons



**WARNING!**  
**Risk of injury to unauthorised persons!**

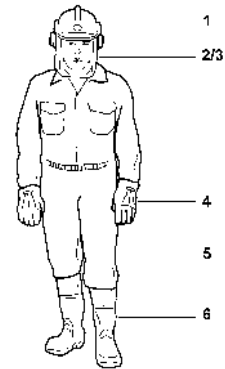
Non-instructed persons are not aware of the dangers in the work area and are considered to be unauthorized.

- Keep unauthorised persons away from the work area, in case of doubt contact the persons concerned and show them to leave the work area.
- Interrupt work while unauthorized persons are in the work area.

## 3.6 Personal protective equipment

Personal protective equipment must be worn during work.

- (1) Helmet with hearing protection
- (2) Visor or safety goggles
- (3) Dust protection / breathing mask
- (4) Safety gloves
- (5) Suitable protective clothing
- (6) Safety shoes with protective cap



**NOTE!**

*Protective gloves must not be worn for rotating parts where there is a risk of being drawn in. Here the risk of wearing is clearly higher than the intended protective effect.*

## 3.7 Dangers

The machine has been subjected to a risk assessment. The hazards identified in this assessment have been eliminated as far as possible and any risks identified have been reduced. Nevertheless, the machine still poses residual risks, which are described in the following section.

- ▶ The warning and safety instructions given here and in the chapters of this manual must be strictly observed to avoid possible damage to health and dangerous situations.

### 3.7.1. Risks from mechanical hazards

#### Rotating tools



**CAUTION!**  
**Risk of injury through cuts!**

Reaching into rotating tools can lead to serious injuries.

- Never touch the rotating blade
- Never work without blade protection
- Only work with closed blade protective cover
- Remove cut material only when the cutting wheel is stationary

**Flying cut material / tool****CAUTION!**  
**Risk of injury from pieces of cut material or tools flying around!**

Failure to wear suitable protective equipment, working with the cut-off wheel protective cover open or with unsuitable cut-off wheels can lead to serious injury.

- Wear protective goggles
- Only work with closed protective cover
- Only work with blades that are designed for the material to be cut

**Movable components****CAUTION!**  
**Risk of injury from crushing moving parts!**

Failure to wear suitable protective equipment can lead to serious injury.

- Wear protective gloves
- Lock the cutting head
- Lock the guide bridge

**3.7.2 Risks from electrical hazards****Electric current****DANGER!**  
**Danger to life from electric current!**

Touching live parts leads to death. Damage to the insulation or individual components can be life-threatening.

- Before starting any work on the electrical system, disconnect the machine from the power supply. Check that the machine is de-energised!
- Before maintenance, cleaning and repair work, switch off the electrical power supply and secure it against being switched on again.
- If the insulation is damaged, switch off the power supply immediately and arrange for repair.
- Do not bypass or disable fuses.
- When replacing defective fuses, always ensure that the current rating is correct.
- Keep moisture and humidity away from live parts.
- Any work on the electrical system may only be carried out by qualified electricians.

**3.7.3 Risks from thermal hazards****Hot surfaces****CAUTION!**  
**Risk of burns from hot surfaces!**

Contact with hot components can cause burns.

- Do not touch surface
- Before all work, ensure that the components have cooled down to ambient temperature.

### 3.7.4 Risks due to specific physical agents



**CAUTION!**

**Risk of injury due to special physical effects!**

Failure to wear suitable protective equipment can lead to serious injury.

- Wear ear protection
- Wear safety gloves
- Observe appropriate breaks
- Regular medical check 'G20'

### 3.7.5 Risks from hazardous substances



**CAUTION!**

**Risk of injury from hazardous substances such as dust and cutting water or cutting sludge!**

Failure to wear suitable protective equipment may result in damage to health.

- Use personal protective equipment
- Replace cutting water regularly
- Use a dust mask
- Switch on water supply

### 3.7.6 Risks from working environment conditions



**CAUTION!**

**Risk of injury due to insufficient lighting.**

Working under inadequate lighting can lead to serious injury.

- Ensure adequate lighting at the workplace

### 3.7.7 Risks due radiation hazards



**CAUTION!**

**Risk of injury due to inadequate lighting.**

Work in inadequate lighting conditions may lead to heavy injuries.

- Provide for adequate lighting at the workplace.

### 3.8 Safety devices



**WARNING!**

**Danger to life due to defective or bypassed safety devices!**

Safety devices that are not functioning, bypassed or disabled do not protect against the dangers and can lead to serious injury or death.

- Always check that all safety devices are correctly installed and functional before starting work.
- Never override safety devices.
- Ensure that the safety devices are always freely accessible

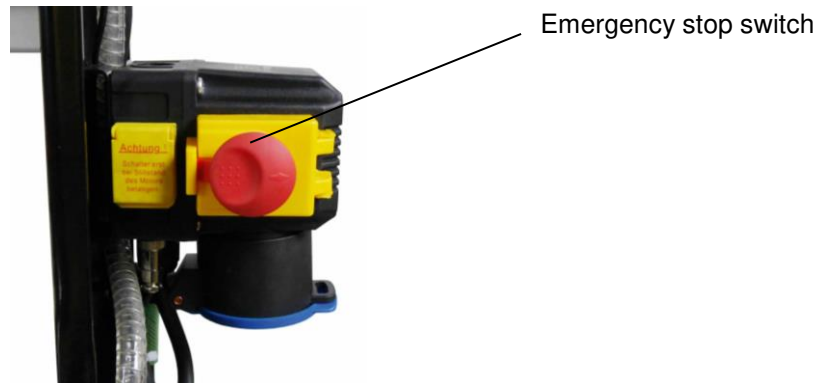


**NOTE!**

Location of the safety devices → "Design and function".

### Emergency stop switch

By pressing the emergency stop switch, the drive of the machine is switched off. The power supply up to the switch is maintained. Disconnect the machine from the power supply by pulling the mains plug. Eliminate the fault that has occurred before switching on again after an emergency stop.



### 3.9 Spare parts



**WARNING!**  
**Risk of injury due to incorrect spare parts!**

Faulty spare parts can seriously impair safety and cause damage, malfunctions or even total failure.

- Only use original spare parts.

Original spare parts can be obtained from authorised dealers or directly from the manufacturer.

### 3.10 Conduct in case of danger and accidents

#### Preventive measures

- ▶ Always be prepared for accidents and fire.
- ▶ Keep first aid equipment (first aid kit, blankets, etc.) and fire extinguishers handy.
- ▶ Familiarise personnel with the accident reporting, first aid and rescue facilities.
- ▶ Always keep access routes for rescue vehicles clear.

#### Acting correctly in the event of an emergency

- ▶ Trigger emergency stop immediately
- ▶ initiate first aid measures
- ▶ Rescue affected persons from the danger zone.
- ▶ Inform the person responsible at the place of operation.
- ▶ In case of serious injury, alert the doctor and/or fire brigade.
- ▶ Keep access routes open for escape routes.



## 3.11 Signage

### Danger from electric current



**DANGER!**  
**Danger to life from electric current!**

Touching live parts leads to death. Damage to the insulation or individual components can be life-threatening.

- Before starting any work on the electrical system, disconnect the machine from the power supply. Check that the machine is voltage-free!
- Before maintenance, cleaning and repair work, switch off the electrical power supply and secure it against being switched on again.
- If the insulation is damaged, switch off the power supply immediately and arrange for repair.
- Do not bypass or disable fuses.
- When replacing defective fuses, always ensure that the current rating is correct.
- Keep moisture and humidity away from live parts.
- Any work on the electrical system may only be carried out by qualified electricians.
- annual inspection of the electrical system according to VDE0701

### Danger from cuts



**CAUTION!**  
**Risk of injury through cuts!**

Reaching into moving tools can lead to serious injuries.

- Never touch the rotating blade
- When changing the blade disconnect the machine from the power supply

## Illegible signage



### CAUTION! Risk of injury due to illegible symbols!

Stickers and signs that have become obscure no longer make danger spots sufficiently recognizable and cannot indicate possible injury hazards.

- Always keep pictograms, safety, warning and operating instructions in a clearly legible condition.
- Replace damaged or illegible pictograms, inscriptions, signs or stickers immediately.

The following symbols and information signs are located on the machine to draw attention to possible dangers:

	<p>Warning of rotating tool!</p>	
	<p>Direction of rotation of the saw blade</p>	
	<p>wear gloves wear hearing protection Machine complies with EU directive Observe operating instructions Wear protective goggles</p>	
	<p>Laser class:II wavelength, type: 635nm  Look out! Do not look into the beam</p>	

## 4 Technical data

### 4.1 Dimension machine

Information	Value	Unit
Length	1500	mm
Width	640	mm
Height	1490	mm
Tare weight	113	kg
Operating Weight	145	kg

### 4.2 Dimensions of cut material

Information	Value	Unit
max. Length	1250	mm
max. Width	600	mm
Max. Height	100	mm
max. Weight	80	kg

### 4.3 Connection and motor values

Information	Value	Unit
Nominal voltage	230	V
Nominal frequency	50	Hz
Power	2,2	kW
Power consumption	13	A
Necessary protection	16	A
Cutting shaft speed	2800	U/min
Motor protection class	IP55	
Motor operating mode	S6	

### 4.4 Other data

Information	Value	Unit
Water sump	30	l
Cutting blade	350	mm
Bore	25,4	mm
Flange Ø	90	mm
Vibration value	2,3	m/s <sup>2</sup>
<b>Measuring tolerance</b>		
Vibration value	0,2	m/sec <sup>2</sup>

### 4.5 Water pump

Information	Value	Unit
Nominal voltage	230	V
Nominal frequency	50	Hz
Power	55	W
Operating mode	S2	

### 4.6 Laser

Information	Value	Unit
Power	1	mW
Rated current, max.	50	mA
Nominal voltage	3-6	V DC
Wavelength	635	nm
Pulse duration	stufenlos	
Class	II	
Protection class	III	

### 4.7 Noise emissions

	Without load	Full load
Sound pressure level	64 dB (A)	78 dB (A)
Sound power level	75 dB (A)	91 dB (A)

Measuring tolerances	
Sound pressure level	4 dB (A)
Sound power level	2,5 dB (A)

Guaranteed sound power level	80 dB (A)
------------------------------	-----------

The specification defines the volume of the noise pollution, in relation to the operator's workplace and the sound power level of the machine.

The emission values were carried out in accordance with the standards EN ISO 3744, EN 12418 and Directive 2005/88/EC.

## 4 Technical data

### 4.8 Operating conditions

#### Workspace

Angabe	Value	Unit
Temperature range	Room temperature 5-45	°C
Relative humidity, maximum	60 (without condensation)	%
Conditions	Only operate the machine in a dust-free environment! Avoid direct wetness, dust exposure and frost. Do not operate in strong electric and magnetic fields! Do not operate the machine in an explosive environment!	

### 4.9 Cutting blades

Cutting blade	Cutting blade diameter	Material	Number of segments	Segment height
SlimFast	Ø 350 mm	ceramic, fine stoneware, tiles, marble, granite	-	10 mm
RX1		concrete, exposed aggregate concrete, brick, clinker, hard stone, granite	24	16 mm
GN25		hard stone, granite, natural and artificial stone	24	10 mm



**DANGER!**  
**Risk of injury due to defective or incorrectly mounted blades!**

Wrong direction of rotation and damaged cut-off wheels can lead to serious personal injury!

- Before starting work, check cut-off wheels for breakage of individual segments, segment pieces, cracks at the segment foot, deformation of the cut-off wheel or wear.
- Observe direction of rotation arrows on the cut-off wheel and cut-off wheel protective cover!



**DANGER!**  
**Risk of injury from untested or approved tools!**

Untested or approved cutting discs or circular saw blades can cause serious personal injury!

- Check that the correct cut-off wheel is fitted before starting work.
- Observe direction of rotation arrows on the cut-off wheel and cut-off wheel protective cover!

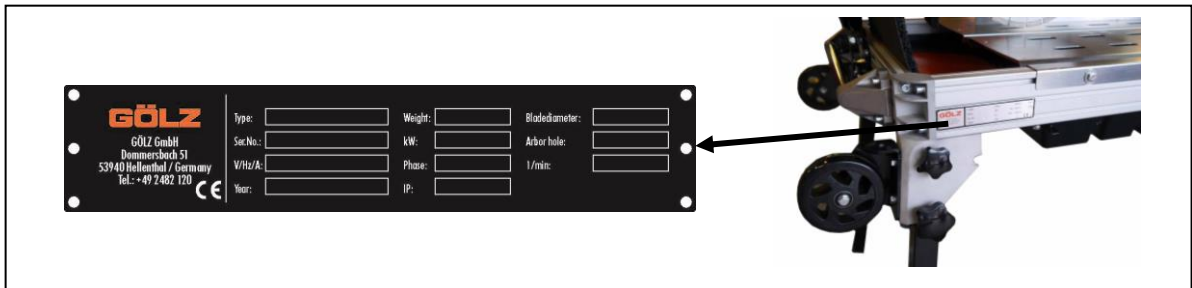


**NOTE!**

All cut-off wheels used must be designed for the maximum drive speed of the machine and the intended use with regard to their permissible maximum cutting speed.

## 4.10 Type plate

The type plate is located on the base frame of the machine.



## 4.11 Requirements for the installation site

The substrate for the installation must:

- ▶ have sufficient load carrying capacity.
- ▶ have a non-slip surface.
- ▶ be even.

### Installation conditions

- ▶ Select the installation site according to the required space according to the technical data.



**NOTE!**

*The machine is designed for daylight use. In case of poorly lit or unlit working areas, ensure sufficient workplace illumination.*

## 4.12 Storage requirements

### Storage conditions

Always store the machine, components, assemblies or parts only under the following conditions:

- ▶ Do not store outdoors
- ▶ Store dry and dust-free
- ▶ Do not expose to aggressive media
- ▶ Protect from solar radiation
- ▶ Avoid mechanical shocks
- ▶ Storage temperature 5 °C to 45 °C
- ▶ Relative air humidity, max. 60

When storing for longer than 3 months, regularly check the general condition of all parts and the packaging. If necessary, refresh or renew the preservation.

**5 Design and function**

The machine consists of the base frame with swing-out legs including the installed technology, the motor, the cutting table, the cutting disk protection hood with cutting disk, and the water tank with water pump.

**5.1 Scope of delivery and responsibilities**

The machine was developed and built under the sole responsibility of Gölz GmbH.

After handover to the operator, the responsibility for safe handling and instruction of the operating personnel is transferred to the operator.

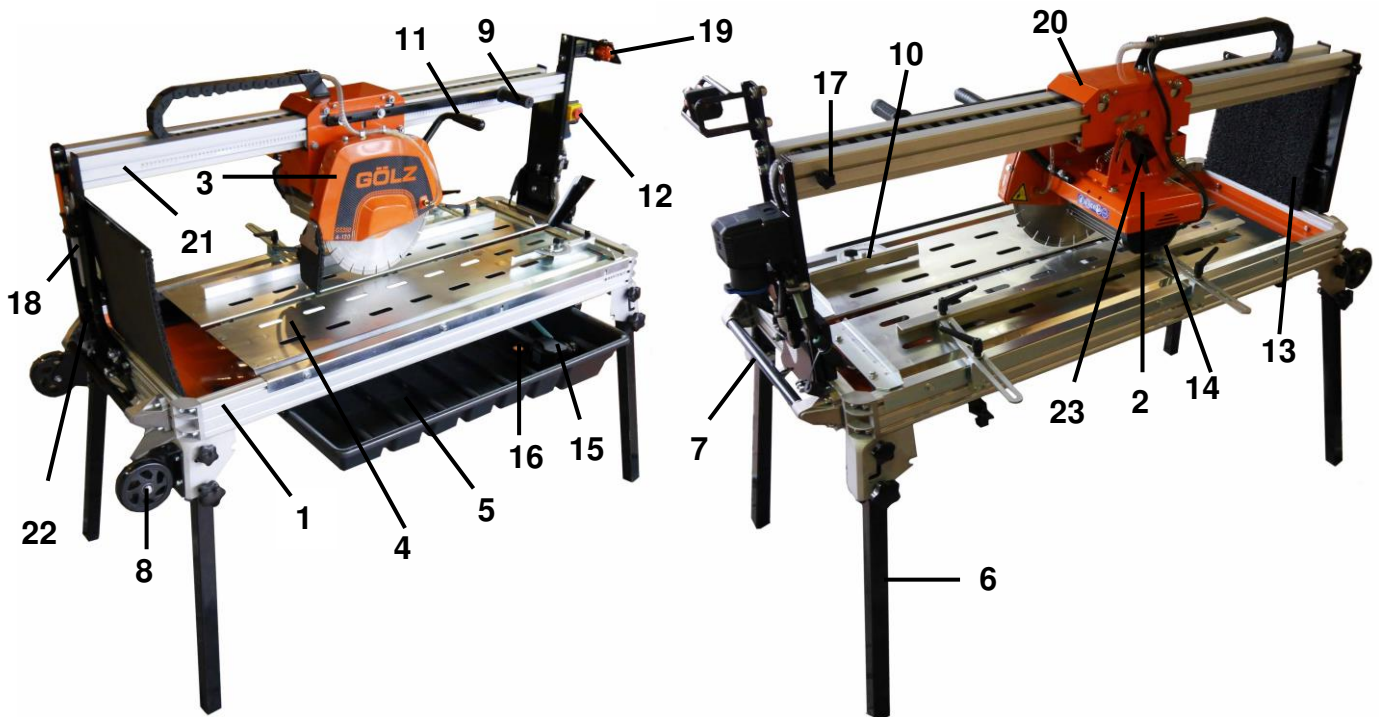
The manufacturer offers training on the machine.

The following components are included in the scope of delivery:

<b>Component</b>	<b>Qty</b>
Bridge saw GS350A-120	1
Technical documentation	1

<b>Optional accessories</b>	<b>Qty</b>
Transport wheels Support leg	1
Lateral roll jib	1
Lateral jib	1
T-Lock tile clamping device	1
Tile stop 1m	1

## 5.2 GS 350A-120



1	Base frame	9	Handle long	17	Transport security
2	Cutting head	10	Stop bracket	18	Tool holder
3	Tool holder	11	Cutting head handle	19	Laser
4	Cutting table	12	Connector / Switch (emergency stop & main switch)	20	Cutting head mounting
5	Water sump	13	Splash guard	21	Guide bridge
6	Pillars	14	Motor	22	Angle adjustment
7	Transport handle	15	Water pump	23	Locking lever
8	Transport wheels	16	Drain plug		

### Base frame

The base frame (1) is a robust aluminium construction.

### Guide bridge with cutting head

The cutting head holder (20) is a welded steel construction and moves over the guide bridge (21). The cutting head (2), drive motor (14) and cut-off wheel guard (3) are attached to the cutting head holder. The guide bridge can be swivelled steplessly up to 45° (jolly) via the angle adjustment (22) and thus enables mitre cuts. The cutting head holder can be fixed by means of transport locks (17). The cutting head can be easily adjusted and moved with the cutting head handle (11).

### Cutting blade protective cover

The cut-off wheel protective cover (3) protects against contact with the cut-off wheel and against hazardous parts being thrown out. It must always be fitted during operation! The cut-off wheel protective cover can be opened to change the cut-off wheel. The direction of rotation of the cut-off wheel is marked with an arrow on the cut-off wheel protective cover.

### Cutting table

The cutting table (4) is an extremely stable support table. Wide openings allow the water to flow back into the water tray (5). The cutting table can be easily removed for cleaning.

**Cooling water supply**

An electric water pump (15) in the water pan (5) provides the cooling water supply and transports the cooling water from the water pan to the cutting wheel. A sufficient water supply results in a longer service life of the cut-off wheel and dust binding. The water supply can be adjusted via the tap on the cut-off wheel protective cover. The water pump must never run dry. The water pan can be emptied via a drain plug (16).

**Electric motor and switch-plug combination**

Electric motor with 2,2kW. The motor has a thermal overload protection which trips if the motor is overheated. The machine can only be restarted when the engine temperature has dropped and is within the operating temperature range.

Switch-plug combination (12) with built-in undervoltage release which prevents the motor from restarting after a power failure. After a power failure, the machine must be restarted manually. The switch is equipped with an emergency stop function. After actuating the emergency stop flap, it locks and immediately disconnects the motor from the power supply so that the machine comes to a standstill. A restart of the machine is only possible after unlocking the emergency stop flap. **Laser**

The laser (19) is electrically connected to the electric motor, switch-plug combination (12) and switches on as soon as the motor is running. The laser is mounted at the beginning of the guide rail and shows the exact course of the cut.

**NOTE!**

*For design reasons, the emergency stop function flap is located directly above the main switch. An impact on the outer function flap causes an emergency stop. By opening the flap on this switch, the machine can be switched off via the main switch.*

**NOTE!**

*After switching on the machine, the cut-off wheel starts to rotate immediately!*

**5.2.1 Functional description**

The bridge saw is exclusively intended to cut building materials in the sizes specified under →Technical data.

The responsible operating personnel places the products on the machine by hand.

Fix the cutting head to the desired cutting depth by means of the cutting head handle and locking lever.

Only move the cutting head over the attached handles.

By pressing the main switch, the machine starts the electric motor as well as the laser and the cutting disc starts rotating immediately. The water supply must then be switched on separately via the water pump switch located below the main switch. The water supply can be adjusted via the water tap on the cut-off wheel guard.

The cutting head is pulled slowly through the material by the handles until the rear stop point of the cutting head is reached. The cutting speed of the cutting process is controlled manually.

When the cutting process is finished, the motor is switched off via the main switch, the water supply is interrupted by pressing the switch of the water pump.



## 6 Transport & Packaging

### 6.1 Safety instructions for transport



**CAUTION!**  
**Damage due to improper transport!**

Improper transport can cause considerable damage to the transported goods and objects in the vicinity.

- Always proceed with the greatest care and caution when loading, unloading and internal transport of goods.
- Observe the instructions and symbols on the packaging.
- Always remove transport locks only during assembly.

### 6.2 Transport Inspection

Check the condition of the transport goods immediately upon receipt of the delivery for completeness and damage.

For externally visible transport damage:

- ▶ Do not accept delivery or accept it only under reserve.
- ▶ Enter the extent of damage on the transport documents and note it on the carrier's delivery note.
- ▶ Initiate complaint.



**NOTE!**

*Complain about any defect immediately upon receipt of the goods!*




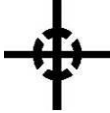
*Claims for damages due to transport damage can only be made within the valid complaint periods.*

### 6.3 Transport symbols

According to the contents, there are symbols on the outside of the transported goods which must be observed during transport and storage.

**Meaning of the transport symbols**

The following transport symbols can be found on transported goods:

	<p><b>Top</b></p> <p>The arrowheads mark the top of the transported goods. They must point upwards, otherwise the contents may suffer damage.</p>		<p><b>Protect from moisture</b></p> <p>Protect transported goods from moisture and keep them dry.</p>
	<p><b>Attachment point</b></p> <p>Attach slings only at the marked points.</p>		<p><b>Focal point</b></p> <p>Indicates the centre of gravity of the transported goods. Observe the centre of gravity position when lifting and transporting!</p>

**6.4 Transportation and storage****Handling the packaging**

The machine is packed safely and in an environmentally friendly manner for the expected transport conditions. The packaging protects the components from damage and corrosion until the start of assembly.

- ▶ Do not remove packaging and transport locks until before installation.
- ▶ Dispose of packaging material according to local regulations.

**CAUTION!**  
**Environmental damage due to incorrect disposal!**

Packaging materials are valuable raw materials and can be reused or sensibly processed and recycled.

- Always dispose of packaging material in an environmentally friendly manner.
- Observe local regulations, if necessary commission a specialist company with the disposal.

**Transport of the machine****CAUTION!**  
**Damage due to improper transport!**

Improper transport can cause considerable damage to the machine and nearby objects.

Before every transport:

- the cutting head must be secured using the transport lock
- the cutting head must be lowered and locked
- the machine must be de-energized

The machine can be transported by one person using the attached transport rollers or by two persons using the transport handles.

**NOTE!**

*The machine is not designed for crane transport! There are no suitable load carrying points on the machine.*

**Storage of the machine**

Store the machine under the following conditions:

- ▶ Do not store outdoors
- ▶ Store dry and dust-free.
- ▶ Do not expose to aggressive media.
- ▶ Protect from solar radiation.
- ▶ Avoid mechanical shocks.
- ▶ Storage temperature: 5 to 45 °C.
- ▶ Relative humidity: max. 60 %.
- ▶ If stored for longer than 3 months, regularly check the general condition of all parts and the packaging. If necessary, refresh or renew the preservation.

**NOTE!**

*Only store cut-off wheels upright or suspended!  
Protect from moisture!*

## 7 Installation and initial commissioning

### 7.1 Safety Instructions for Installation

**WARNING!**  
**Risk of injury due to improper installation!**

Improper execution of work and errors during installation can lead to serious injuries at work and life-threatening situations during commissioning and operation.

- Any installation work may only be carried out by trained personnel authorised by the operator.
- Ensure that there is sufficient clearance for installation before starting work.
- Always pay attention to order and cleanliness in the working area!

**DANGER!**  
**Danger to life from electric current!**

Touching live parts leads to death. Damage to the insulation or individual components can be life-threatening.

- Connection, testing and measuring activities on electrical parts may only be carried out by qualified electricians.
- If electrical components are defective, switch off the power supply immediately and arrange for repair.
- Keep moisture away from live parts.

### 7.2 Setting up

Place the machine in a suitable place. Ensure that the cutting head is secured by the transport lock. To facilitate set-up, the cutting head can be fixed to the respective attachment points to set up the machine on the opposite transport handles. Check that the machine is in a secure position before putting it into operation.



- ▶ Loosen the star knob screw (2) and lift the machine over the transport handles (1)
- ▶ Fold the support legs (3) in or out and make sure that the support legs are in the catch.
- ▶ To secure, retighten the star grip screws (2).

**Personal protective equipment**

- ▶ Protective clothing
- ▶ Protective gloves
- ▶ Safety shoes

## 7.3 Connect

Before connecting the machine to a power source, make sure the following:

- ▶ The voltage / phase of the supply corresponds to the specifications on the motor and machine nameplate
- ▶ The existing power line must be earthed in accordance with the safety regulations
- ▶ Sufficient cable size of the extension cable, H07RNF 3x2.5 mm<sup>2</sup> up to 50 m for 230V



**NOTE!**

*With a cable length >50m there may be a loss of performance on the machine!*

### Personal protective equipment

- ▶ Protective clothing
- ▶ Protective gloves
- ▶ Safety shoes
- ▶ Ear protection
- ▶ Safety goggles

## 7.4 Initial commissioning and acceptance, general



**DANGER!**

**Risk of injury during initial commissioning or adjustment work. Therefore:**

- Before starting work, put the machine out of operation and secure it against being switched on again. Attach warning signs!
- Ensure that the machine does not stand on slopes or pit edges
- Pay attention to a straight underground
- Ensure adequate lighting
- Keep the environment clean and free from objects and lines
- Ensure that no unauthorised persons are present in the machine area



The machine is delivered fully assembled. However, the cut-off wheel and the stop angle must still be fitted. The support legs must be folded out.

## 7 Installation and initial commissioning

### 7.4.1 Measures before initial commissioning

#### 7.4.1.1 Mounting the cut-off wheel

To install a new cut-off wheel or change a used cut-off wheel, proceed as follows:

1. switch off the machine and disconnect the power supply by pulling the power cord
2. loosen the screws on the cut-off wheel protective cover so that you can remove the front half of the cut-off wheel protective cover
3. loosen the nut from the motor shaft and remove the outer cutting flange
4. clean the cutting flange, nut and motor shaft
5. check the components for signs of wear
6. mount or replace the cut-off wheel. Make sure that the cut-off wheel and the motor shaft rotate in the correct direction



**NOTE!**

*The direction of rotation arrow on the blade indicates the correct direction of rotation.*

7. place the outer cutting flange back onto the motor shaft
8. screw the nut back onto the motor shaft and tighten
9. put the front cutting disc cover back on the rear cutting disc cover
10. retighten the screws on the cut-off wheel protective cover



**NOTE!**

*The cutting disc must not touch the table, regardless of its position or the position of the cutting head!*

#### 7.4.1.2 Filling the water sump

Before starting the machine, the water tray must be filled with water. Use clear, clean water.



**ATTENTION!**

The water pump must not run without water, otherwise it may be damaged.



**NOTE!**

*Make sure that cooling and rinsing water as well as cutting slurries remain. These must be collected, filtered and disposed of accordingly.*



## 8 Operating

### 8.1 Safety instructions for operation

**WARNING!****Risk of injury due to improper operation!**

Improper operation can lead to serious injuries.

- Operation may only be carried out by trained personnel authorised by the operator.
- Before carrying out any work, ensure that the safety devices are correctly installed and function properly.
- Never override safety devices.
- Always pay attention to order and cleanliness in the working area! Loose objects, components, workpieces, tools and cleaning equipment lying around are sources of accidents.

**DANGER!****Danger to life from electric current!**

Touching live parts leads to death. Damage to the insulation or individual components can be life-threatening.

- If electrical components are defective, switch off the power supply immediately and arrange for repair.
- Keep moisture away from live parts.

#### Personnel

- ▶ Instructed personnel

#### Personal protective equipment

- ▶ Protective clothing
- ▶ Protective gloves
- ▶ Safety shoes
- ▶ Ear protection
- ▶ Safety goggles

### 8.2 Intended working position of the operator

The operator stands in front of the machine near the emergency stop switch, so that he can push the cutting head back and forth by means of the corresponding handle, and also to trigger the emergency stop at any time in emergency situations.





## 8.3 Preparations for launch

To use the machine safely and for its intended purpose, the following requirements must be met:

- ▶ The machine stands securely
- ▶ The water tray is filled with clean, clear water
- ▶ The machine was checked for damage, loose screw connections and for completeness
- ▶ The water supply is functional
- ▶ The direction of rotation arrow on the cut-off wheel and the cut-off wheel protective cover must correspond
- ▶ A suitable blade, which meets the optimum conditions, must be fitted

## 8.4 Switch on

The machine is switched on via the main switch. To do this, open the emergency stop function flap and press the green button.



### *NOTE!*

#### *Check after start:*

- The cooling water must be conveyed in sufficient quantity from the water pump to the cut-off wheel and discharged on both sides. Ist dies nicht der Fall, Maschine sofort stoppen!

The motor is equipped with a thermal protection which is activated in case of a too high temperature rise.

Before restarting the machine, wait about 30 minutes until the motor has cooled down.

**8 Operating****8.5 Cutting process****8.5.1 Normal cuts with 90° adjustment**

When used in 90° position, the cutting head is in the fixed position. Proceed as follows for adjustment:

1. switch off the machine -> the cutting disc must not turn!
2. loosen the adjusting screw
3. place the cutting head in the desired position

**NOTE!**

*The cutting disc must not touch the table, regardless of its position or the position of the cutting head!*

4. tighten the adjusting screw -> check that the cutting head is fixed in height and cannot move
5. place the material to be cut on the table
6. check the position of the material using the angular stop.
7. start the engine and the water pump and open the water tap
8. Grasp the chain-guided crank handle on the cutting head with your right hand and the transport handle on the machine frame with your left hand

**NOTE!**

*In an emergency, use your left hand to operate the emergency stop button on the switch.*

9. Then crank the cutting head slowly and without pressure through the loaded material. The cutting disc will then cut through the material

### 8.5.2 45°- bevel cuts

The machine offers the possibility to perform 45° bevel cuts.

For 45° bevel cuts we proceed as follows:

1. switch off the machine -> the cutting disc must not turn!
2. loosen the star knob screws on the bridge on both sides of the machine
3. swivel the complete cutting head with bridge into the desired position. Use the scale on the side for orientation.
4. retighten the star knob screws.
5. next, loosen the adjusting screw.
6. adjust the depth stop and fix this setting



**NOTE!**

*The cutting disc must not touch the material to be cut or the fence angle, regardless of its position or the position of the cutting head!*

7. place the material to be machined on the table Check the position of the material using the angle stop.
8. start the engine and the water pump and open the water tap
9. grasp the chain-guided crank handle on the cutting head with your right hand and the transport handle on the machine frame with your left hand



**NOTE!**

*In an emergency, use your left hand to operate the emergency stop button on the switch.*

10. Then crank the cutting head slowly and without pressure over the loaded material. The cutting disc will then cut through the loaded material.

To return the guide bridge with cutting head to the 90° position after this cutting operation, proceed as follows:

1. switch off the machine -> the blade must not turn!
2. loosen the star knob screws on the bridge on both sides of the machine
3. swivel the complete cutting head with guide bridge into the desired position
4. tighten the star knob screws again.



**NOTE!**

*Hold the cutting head in the 90° position with one hand. Tightening the nut could reverse the angle so that the cutting head is not exactly at 90°.*



**NOTE!**

*The cutting wheel must not touch the material to be cut, regardless of its position or the position of the cutting head!*

### 8.5.3 Water supply

Heavily contaminated water reduces the service life of the water pump and the cut-off wheel.

- ▶ If used frequently, change the water several times a day and collect, filter and properly dispose of the cutting sludge
- ▶ Clean the suction strainer of the water pump with each water change

### 8.6 Ending the cutting process

To stop the machine, open the emergency stop cover of the switch and press the red button.



**NOTE!**

*For design reasons, the emergency stop function flap is located directly above the main switch. An impact on the outer function flap causes an emergency stop. By opening the flap on this switch, the machine can be switched off via the main switch!*

## 9 Maintenance & Cleaning

### 9.1 Safety instructions for maintenance

**WARNING!****Risk of injury due to improper maintenance!**

Improper maintenance can lead to injuries.

- Maintenance work may only be carried out by trained specialist personnel authorised by the operator.
- Ensure that there is sufficient clearance for installation before starting work.

**DANGER!****Danger to life from electric current!**

Touching live parts leads to death. Damage to the insulation or individual components can be life-threatening.

- Before maintenance and repair work, switch off the electrical system and secure it against being switched on again.
- Keep moisture away from electrical components.

**WARNING!****Risk of injury due to incorrect spare parts!**

Faulty spare parts can seriously impair safety and cause damage, malfunctions or even total failure.

- Only use original spare parts.

**CAUTION!****Risk of injury through cuts!**

Reaching into moving tools can lead to serious injuries.

- Never touch the rotating blade
- If work in the machine is necessary, disconnect the machine from the power supply

### 9.2 Maintenance plan

The following sections describe the maintenance operations required for optimum and trouble-free operation.

- ▶ If increased signs of wear on the components are detected during the regular inspections, shorten the maintenance intervals on the basis of the actual signs of wear!
- ▶ Draw up a maintenance log for each maintenance work! The protocol helps with error analysis, enables the adjustment of the required intervals to the actual operating conditions and possible warranty claims.
- ▶ For questions about maintenance work and intervals: contact the manufacturer.

Interval	Maintenance work	Personnel
Before each commissioning	Optical control - of the complete machine - the tool holder (flanges and blade holder) - of the tool (blade) - the operating elements (handles, wheels, etc.) - the water tray and hoses - of the cutting head and cutting material table	Operating personnel
	Optical control - the electrical system - of the engine - the water pump	Technical staff
	Clean the tool holder (flanges and blade holder)	Operating personnel
	Check tool (blade) for replacement	Operating personnel
	cutting head, cutting table and chain - Lubrication - Grease - Oiling - Apply corrosion protection	Operating personnel
After end of work	Clean up - Entire machine - Control elements (handles, wheels, etc.) - Tools (blade) - cutting head, cutting table and chain	Operating personnel
	Empty and clean the water hoses and water tray	Operating personnel
	Clean up - Motor housing - Water pump	Technical staff
	Tool holder (flanges and blade holder) - Lubrication - Grease - Oiling - Apply corrosion protection	Operating personnel
Weekly	Tightening and adjustment - Control elements (handles, wheels, etc.) - cutting head and chain - Screw connection	Operating personnel
Yearly	Carry out statutory safety inspection for - Electrical system - Engine	Elektrofachpersonal
In case of malfunction	Optical control - of the complete machine - of the cutting head and cutting material table	Operating personnel
	Optical control - the water pump	Technical staff
	Retighten and adjust the cutting head and cutting material table	Operating personnel
In case of damage	Change and exchange - complete machine - Tool holder (flanges and blade holder) - Tool (saw blade) - Operating elements (handles, locking wheels etc.) - Water tray and hoses - Cutting head and cutting material table	Operating personnel
	Change and exchange - Electrical system	- Engine - Water pump Qualified electrical personnel

## 9.3 Description of the maintenance work carried out by the operator

**CAUTION!**

The machine must not be cleaned with a high-pressure cleaner, otherwise the machine will be damaged.

**CAUTION!**

The machine must not be foamed and then sprayed with water, otherwise the machine will be damaged.

**CAUTION!**

The blade must not be cleaned with a metal cleaning device (scraper, metal sponge, or similar), as this will damage it.

### 9.3.1 Changing the blade

The blade must be replaced when:

- the diamond segments on the blade are completely worn, damaged or broken off
- the material to be cut changes
- the blade runs uneven

### 9.3.2 Check the water connection

Carry out a visual and audible check that the connections and hoses are tight after each end of work.

### 9.3.3 Water pump and water sump

- Remove dirty water
- Remove accumulated sludge deposits on the water pan floor
- Remove the water pump and place it in a bucket of clean water.
- Plug in the mains plug and let the machine run for about 1 - 2 minutes.
- Switch off the machine.
- Pull out the mains plug and reinsert the water pump -> this prevents the pump wheel from blocking due to sludge deposits.

## 9.4 Measures after maintenance

After finishing the maintenance work, carry out the following steps before switching on:

1. Check all previously loosened screw connections for tightness.
2. Check that all previously removed guards and covers are properly reinstalled.
3. Ensure that all tools, materials and other equipment used have been removed from the work area.
4. Clean the working area and remove any leaked substances such as liquids, processing material or similar.
5. Ensure that all safety devices of the system function properly.

**9.5 Note on components subject to wear and tear**

Components of this machine that are susceptible to wear:

- Rubber sheets
- Hoses
- Couplings
- Slide bearing
- Spring
- Guide spindle
- Eccentric spindle
- Sticker
- Splash guard
- Pump housing with strainer
- Water pump
- Transport wheels
- Handle cover
- Stopper
- Rubber strip
- Guide rail
- Capacitor
- Fan cover
- Needle bearing
- Bearing bush
- Stock
- Ball valve
- Spacer
- Rubber buffer
- Cable protection

Wear of these components does not constitute a product defect.



**NOTE!**  
*Wearing parts are shaded grey in the spare parts list!*



## 10 Faults

### 10.1 Safety Instructions for Troubleshooting

**WARNING!****Risk of injury due to improper troubleshooting!**

Incorrect execution of work during troubleshooting can lead to serious injuries.

- Repair work may only be carried out by trained specialist personnel authorised by the operator.
- Ensure that there is sufficient clearance for installation before starting work.
- Always pay attention to order and cleanliness in the working area! Loose objects, components, workpieces, tools and cleaning equipment lying around are sources of accidents.
- If components have been replaced, check that the spare parts have been fitted correctly. Install all fasteners correctly. Observe screw tightening torques.
- Before recommissioning, ensure that all protective devices are correctly installed and functional.

**WARNING!****Risk of injury from unauthorized restarting!**

When working on individual components, persons can be injured by unexpectedly switching on the power supply.

- Before carrying out any work on individual components, switch off the power supply and secure it against being switched on again.

**DANGER!****Danger to life from electric current!**

Touching live parts leads to death. Damage to the insulation or individual components can be life-threatening.

- Before maintenance and repair work, switch off the electrical system and secure it against being switched on again.
- Keep moisture away from electrical components.

### 10.2 Behaviour in case of disturbances

Basically the following applies:

1. immediately initiate an emergency stop in the event of faults which pose an immediate danger to persons or property
2. switch off all power supplies and secure against being switched on again
3. inform the person in charge at the place of operation.
4. depending on the type of fault, have the cause determined and rectified by authorised specialist personnel.

10.3    **Fault table**

<b>Error message / fault</b>	<b>Possible cause</b>	<b>Removal</b>	<b>Personnel</b>
Machine without function when switched on	Power plug not properly secured	Check proper connection to the power supply	Operating personnel
	Power plug defective	Check mains plug for function, replace if necessary	Qualified electrical personnel
	Loose connection in the electrical system	Have the entire electrical system of the machine checked by	
	Drive motor defective	Have drive motor checked, replace if necessary	
	Main switch defective	Have the main switch checked and replaced if necessary.	
Machine does not have sufficient power	Power plug too long, cable drum in rolled up condition	Observe the prescribed length of the mains plug. Unwinding the cable drum	Operating personnel
	Power of the local grid is not sufficient	Observe and adhere to the connection data of the machine	Qualified electrical personnel
	Drive motor no longer holds speed	Have drive motor checked, replace if necessary	
Little or no cooling water flow	The water pump sucks air	Fill up with water; swing the water pump with the suction side down	Operating personnel
	Hoses clogged	Clean hoses	
	Hose kinked	Check the routing of the hoses	
	Hose leaking or detached	Replace hose or fasten correctly	
	Pump wheel of water pump dirty (strainer)	Clean pump wheel or strainer	
	Water pump without function	Have the electrical supply line to the water pump checked, replace if necessary	Qualified electrical personnel
Motor does not run	Power plug not connected correctly.	Check mains plug for correct connection	Operating personnel
	Fuse on the site distribution board has triggered	Check fuses	
Saw blade wobbles	Blade tension is poor	Send in saw blade	Manufacturer
Segments come loose	Overheated, insufficient cooling	Check cooling water supply	Operating personnel
		Resolder segments	Manufacturer

<b>Fehlermeldung / Störung</b>	<b>Mögliche Ursache</b>	<b>Beseitigung</b>	<b>Personal</b>
High segment wear	Segment binding too soft	Use blade with harder segments, or reduce feed pressure	Operating personnel
	Segments too narrow in relation to motor power and feed pressure	Reduce feed pressure, or use blade with wider segments	
	Number of segments too low	Use blade with more segments, or reduce feed pressure	
	Blade beats	Use new blade, have old one straightened, check cutting shaft, use new one if necessary	
	Blade runs	Check table guide, replace if necessary	
	Abrasive aggregates	Use blade with harder segments	
	Feed pressure too high	Reduce feed pressure	
Saw blade has lateral and vertical runout	Saw blade bent or damaged	Have the saw blade straightened, solder segments onto new blade or new saw blade	Manufacturer
	Flanges dirty or damaged	Clean or replace flanges	Operating personnel
	The motor shaft is bent	Replace the electric motor	Qualified electrical personnel
No power when cutting, saw blade blunt	No saw blade matched to the material	Use the correct saw blade	Operating personnel
	No saw blade matched to the machine output		
	Saw blade too hard		
	Diamonds on segment are blunt	sharpen	Technical staff
Cutting process not optimal	Segments blunt	sharpen	Technical staff
	Saw blade too heavily loaded	Use a suitable saw blade	Operating personnel
	Saw blade tension bad	Send in saw blade	Manufacturer
The mounting hole of the saw blade has run out	Saw blade has rotated on the motor shaft	Check the mounting flange, if necessary exchange	Manufacturer
		Unscrew the location hole and fit the exact ring	Technical staff

<b>Fehlermeldung / Störung</b>	<b>Mögliche Ursache</b>	<b>Beseitigung</b>	<b>Personal</b>
Saw blade has started up	Saw blade overheats too little cooling water	Check cooling water supply	Operating personnel
	Lateral friction due to the course of the cut	Reduce feed rate, pull material through slowly	
Cracks in the steel core; eccentric wear on the saw blade	Saw blade too hard	Use softer saw blade	Operating personnel
	Motor shaft bearing	Replace the motor shaft bearing	

## 10.4 Measures to be taken after the fault has been rectified

After completing the troubleshooting, carry out the following steps before switching on:

1. check all previously loosened screw connections for tightness.
2. check that all previously removed guards and covers are properly reinstalled
3. ensure that all tools, materials and other equipment used have been removed from the work area.
4. clean the work area and remove any leaked substances such as liquids, processing materials or similar.
5. make sure that all safety devices of the machine work properly.

## 11 Disassembly and disposal

After reaching the designed service life, the machine must be dismantled and disposed of in an environmentally friendly manner.

### 11.1 Safety instructions for disassembly and disposal

**WARNING!****Risk of injury in case of improper disassembly!**

Improper work during disassembly can lead to serious injuries.

- Dismantling work may only be carried out by trained specialist personnel authorised by the operator.
- Ensure sufficient freedom of assembly before starting work.
- Always pay attention to order and cleanliness in the working area! Loose objects, components, workpieces, tools and cleaning equipment lying around are sources of accidents.
- Caution on sharp-edged components, corners and tips.
- When dismantling, always secure components so that they do not fall down or overturn.
- Dismantle components properly and professionally in compliance with local occupational safety and environmental protection regulations.
- Contact the manufacturer if anything is unclear.

**DANGER!****Danger to life from electric current!**

Touching live parts leads to death.

Damage to the insulation or individual components can be life-threatening.

- Before disassembly, switch off the electrical power supply and secure it against being switched on again.

**Personnel**

- ▶ Instructed and qualified personnel authorised by the operator

### 11.2 Disassembly

1. switch off the machine and secure it against being switched on again.
2. physically disconnect the entire power supply from the device, discharge residual energy. Check freedom from voltage and pressure.
3. remove operating and auxiliary materials and remaining processing materials and dispose of them in an environmentally friendly manner.
4. clean assemblies and components properly and dismantle them in accordance with the applicable local occupational safety and environmental protection regulations.

### 11.3 Disposal

If no take-back or disposal agreement has been concluded, supply dismantled components for recycling:

- ▶ Scrapping metallic residues.
- ▶ Give plastic parts for recycling.
- ▶ Dispose of other components sorted according to material properties.

**Just for EU-Countries**

Old electrical appliances are recyclable materials and therefore do not belong in the household waste!

According to the European Directive 2012/19/EU on Waste Electrical and Electronic Equipment and its implementation in national law, used power tools must be collected separately and recycled in an environmentally friendly manner.

**CAUTION!****Environmental damage due to incorrect disposal!**

Incorrect or negligent disposal can cause considerable environmental pollution.

- Have electronic waste, electronic components, lubricants, operating materials and other auxiliary materials disposed of by specialist companies.
- Observe the treatment and disposal instructions in the safety data sheets for hazardous substances.
- In case of doubt, consult the manufacturer or obtain information from local authorities or specialist disposal companies on environmentally sound disposal.

## 12 Spare parts list

### 12.1 Use of the spare parts list

The spare parts list is not an assembly or disassembly instruction. The spare parts list serves exclusively to find spare parts quickly and easily, which can be ordered from the sales offices.

**DANGER!****Risk of injury from mounting or dismounting assemblies!**

Using the spare parts list for assembly or disassembly purposes can lead to serious personal injury or even death!

- For assembly and disassembly work, only the corresponding descriptions in the operating instructions must be followed.

### 12.2 Sales offices

**Deutschland - Germany - Allemagne - Duitsland**

GÖLZ® GmbH  
Dommersbach 51  
DE-53940 Hellenthal  
Tel: +49 (0)2482-12 200  
Fax: +49 (0)2482-12 222  
E-Mail: [info@goelz.de](mailto:info@goelz.de) / Internet: [www.goelz.de](http://www.goelz.de)

**Österreich - Austria - Autriche - Oostenrijk**

GÖLZ® Ges.m.b.H  
Samstraße 52  
A-5020 Salzburg  
Tel: +43 (0) 662 - 43 81 75  
Fax: +43 (0) 662 - 43 07 34  
E-Mail: [info@goelz.at](mailto:info@goelz.at) / Internet: [www.goelz.at](http://www.goelz.at)

**Frankreich - France - France - Frankrijk**

GÖLZ® S.A.S.  
1, rue de la Mairie  
F-67370 Berstett  
Tel: +33 (0)3.88.59.43.00  
Fax: +33 (0)3.88.59.47.77  
E-Mail: [info@golz.fr](mailto:info@golz.fr) / Internet: [www.golz.fr](http://www.golz.fr)

**Großbritannien - Great Britain - Grande-Bretagne - Groot-Brittannië**

GÖLZ® (UK) Ltd.  
Unit A5, Springhead, Enterprise Park  
Northfleet  
Kent DA11 8HB  
Tel: +44 1 474321679  
Fax: +44 1 474321477  
E-Mail: [info@goelz.co.uk](mailto:info@goelz.co.uk) / Internet: [www.goelz.co.uk](http://www.goelz.co.uk)

**Benelux**

GÖLZ® Benelux  
Eupener Straße 61  
BE-4731 Raeren-Eynatten  
Tel: +49 (0)2482-12 200  
Fax: +49 (0)2482-12 222  
E-Mail: [benelux@goelz.de](mailto:benelux@goelz.de) / Internet: [www.goelz-online.com](http://www.goelz-online.com)

**Australien - Australia - Australie - Australië**




GOLZ® Pty Ltd.  
44 Stanley Street  
Peakhurst, NSW 2210  
Tel: +61 (0) 2 9534 5599  
Fax: +61 (0) 2 9534 5588  
E-mail: [info@golz.com.au](mailto:info@golz.com.au) / Internet: [www.golz.com.au](http://www.golz.com.au)

**USA**

GOLZ® L.L.C.  
5860 East Osage Ridge Lane  
Columbia MO 65203-6018  
Tel: +1 573 474 4961  
E-Mail: [info@golzusa.com](mailto:info@golzusa.com) / Internet: [www.goelz-online.com](http://www.goelz-online.com)

**NOTE!**

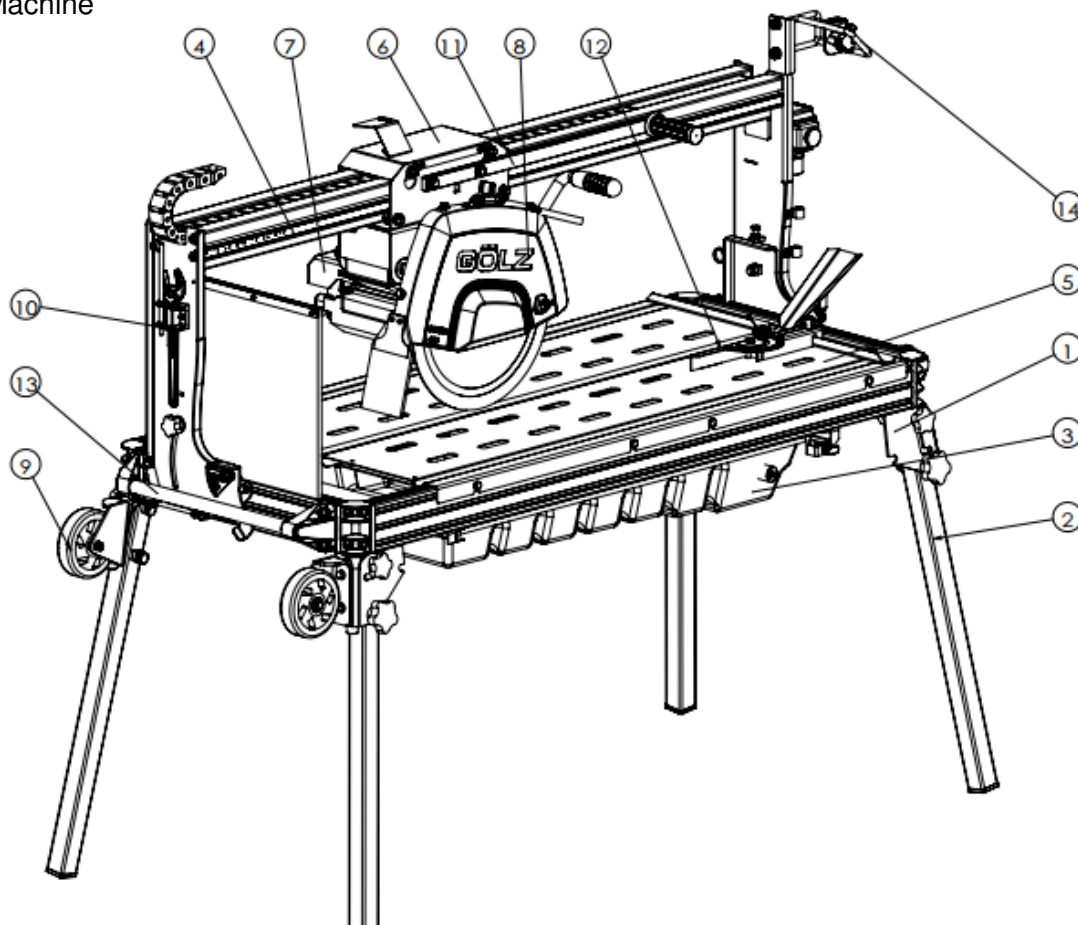
*To avoid wrong deliveries, the details in the order should be checked for correctness and completeness before dispatch! Complete delivery address!*

		
<b>So bekommen Sie schnell und richtig Ihr Ersatzteil</b>	<b>Always indicate</b>	<b>Pour obtenir rapidement les pièces de rechange indiquer</b>
<ul style="list-style-type: none"> <li>• Maschinentyp gemäß Typenschild</li> <li>• Baujahr gemäß Typenschild</li> <li>• Artikelnummer gemäß Ersatzteilliste</li> <li>• Maschinennummer gemäß Typenschild</li> </ul>	<ul style="list-style-type: none"> <li>• machine type according to nameplate</li> <li>• year of manufacture according to nameplate</li> <li>• order number according to spare part list</li> <li>• serial number according to nameplate</li> </ul>	<ul style="list-style-type: none"> <li>• type de la machine conforme de plaque d'identification</li> <li>• Année de construction selon plaque d'identification</li> <li>• Numéro de l'article selon la liste des pièces de rechange</li> <li>• numéro de la machine suivant plaque d'identification</li> </ul>
<p>Für Bestellungen, Fragen und Informationen wenden Sie sich bitte an die zuständigen Stellen.</p>	<p>For orders, questions and information, please contact the competent departments.</p>	<p>Pour les commandes, questions et informations, veuillez-vous adresser aux points de ventes correspondants.</p>



## 12.3 Exploded views and spare parts lists

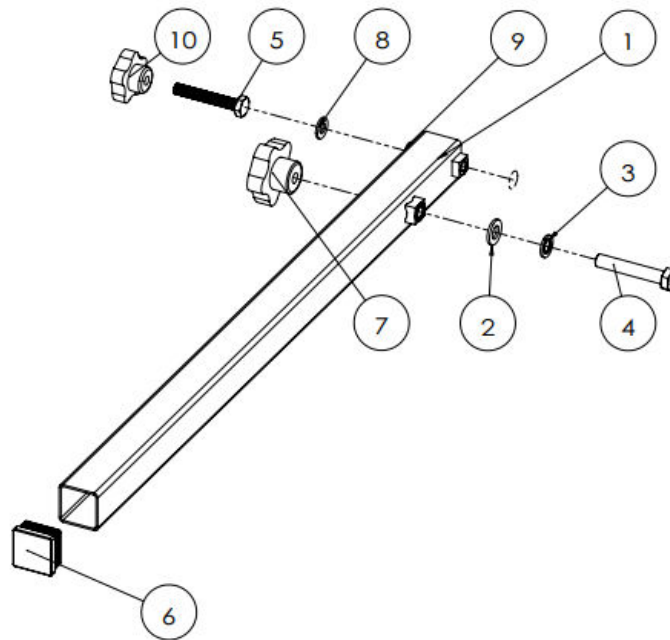
### 12.3.1 Machine



Pos.	Art.-Nr.	Qty.	Norm / Info	Content	Bezeichnung	Description	Désignation
1	-	1			Rahmen kpl.	Frame complete	Châssis complète
2	0282 400 9009	4			Standbein kpl.	Main pillar complete	Jambe de pivot complète
3	-	1			Wasserwanne kpl.	Water tank complete	Bac à eau complète
4	-	1			Führungsbrücke kpl.	Guiding bridge cpl.	Pont de guidage complet
5a	-	1	Stahl		Schnittguttisch kpl.	Cutting table complete	Table de travail complète
5b	-	1	Aluminium				
6	-	1			Schneidkopf kpl.	Cutter head complete	Tête de coupe complète
7	-	1			Schneidkopfaufnahme kpl.	Cutter head acceptance complete	Guide de tête de Coupe complète
8	0289 350 9018	1			Schutzhaube kpl.	Blade guard complete	Capot protecteur complète
9	0289 400 9026	2			Transporträder kpl.	Transport wheel complete	Roue de transport complète
10	0289 350 9017	1			Werkzeughalter mit Werkzeug	Tool holder and tools	Porte-outil avec l'outil
11	0289 350 9034	1			Griff lang kpl.	Handle long complete	Poignée longue
12	0289 200 9013	1			Anschlagwinkel kpl.	Back square complete	Équerre complète
13	-	2			Transportgriff kpl.	Transport handle complete	Poignée de transport complète
14		1			Laser kpl.	Laser complete	Laser complet

## 12 Spare parts list

### 12.3.2 Support leg cpl.



#### Available as spare parts package

Pos.	Art.-Nr.	Qty.	Norm / Info	Content	Bezeichnung	Description	Désignation
-	0282 400 9009	1		Pos. 1-10	Standbein kpl.	Main pillar complete	Jambe de pivot complète

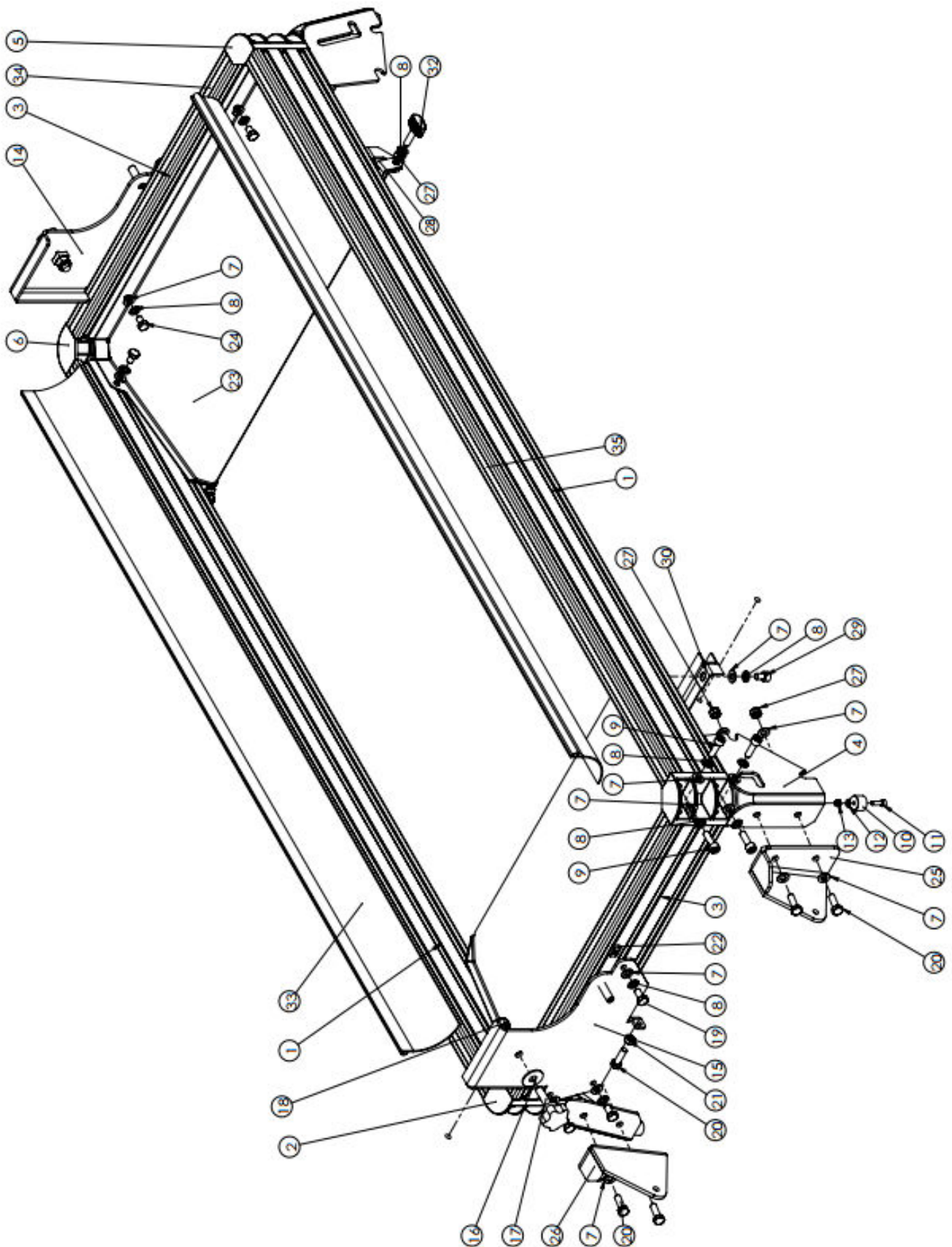
#### Individually orderable

Pos.	Art.-Nr.	Qty.	Norm / Info	Bezeichnung	Description	Désignation
1	-	1		Standbein	Main pillar	Jambe de pivot
7	029 350 9087	1	40x40	Stopfen	Stopples	Bouchon
8	0282 400 9026	1	M12	Sterngriff	Star grip	Poignée-étoile
10	0282 400 9079	1	M10	Sterngriff	Star grip	Poignée-étoile

#### Contents of spare parts package

Pos.	Art.-Nr.	Qty.	Norm / Info	Bezeichnung	Description	Désignation
1	0282 400 9009	1		Standbein	Main pillar	Jambe de pivot
2		1	A13 ISO 7089	Scheibe	Washer	Rondelle
3		1	A12 DIN 127	Federring	Spring washer	Rondelle-ressort
4		1	M12x70 ISO 4017	Schraube	Screw	Vis
5		1	M10x65 ISO 4014	Schraube	Screw	Vis
6		1	40x40	Stopfen	Stopples	Bouchon
7		1	M12	Sterngriff	Star grip	Poignée-étoile
8		1	A10,5 ISO 7089	Scheibe	Washer	Rondelle
9		1	A10 DIN 127	Federring	Spring washer	Rondelle-ressort
10		1	M10	Sterngriff	Star grip	Poignée-étoile

## 12.3.3 Frame cpl.

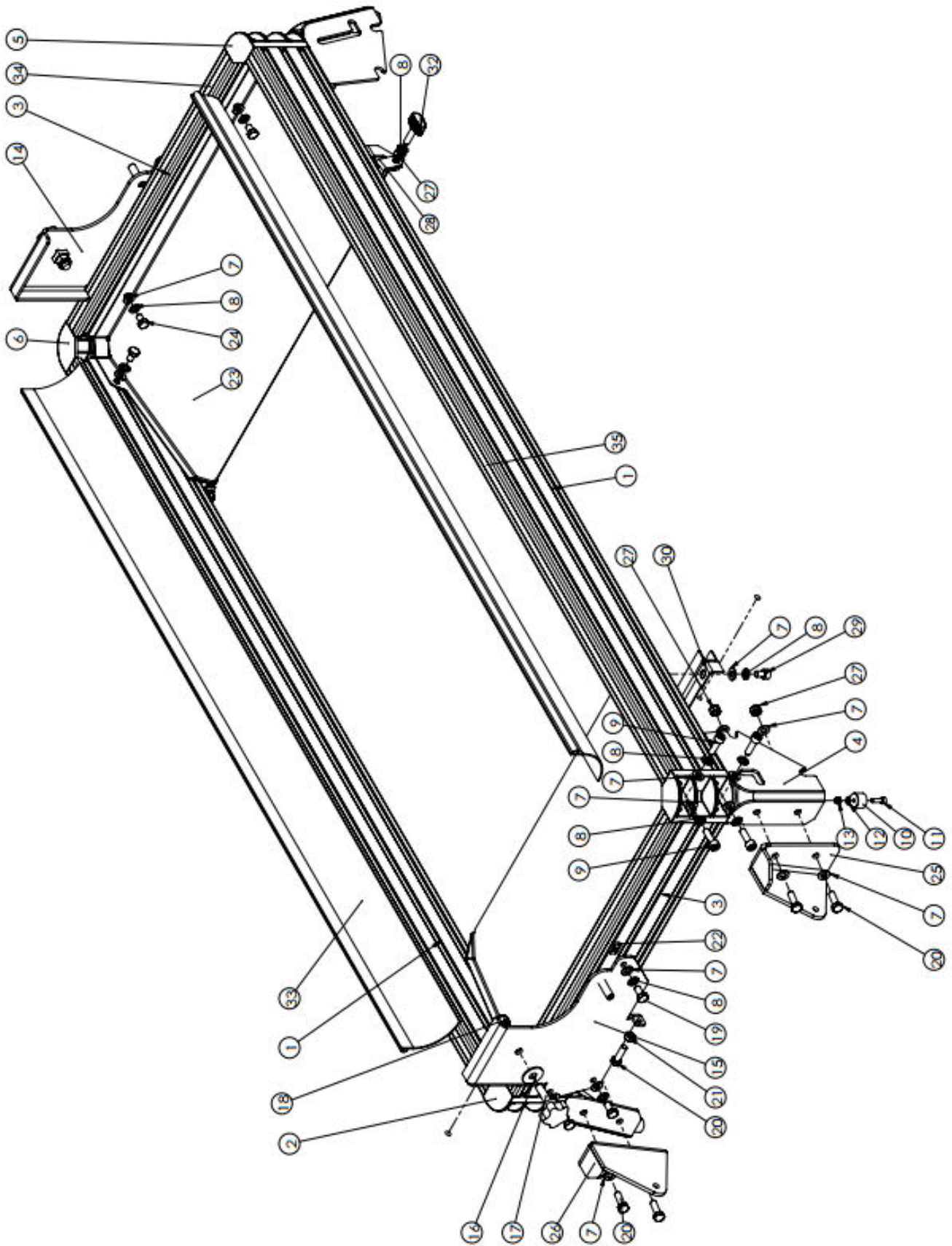


## 12 Spare parts list

Pos.	Art.-Nr.	Qty.	Norm / Info	Content	Bezeichnung	Description	Désignation
-	-	1		Pos. 1-35	Rahmen kpl.	Frame complete	Châssis complète

### Individually orderable

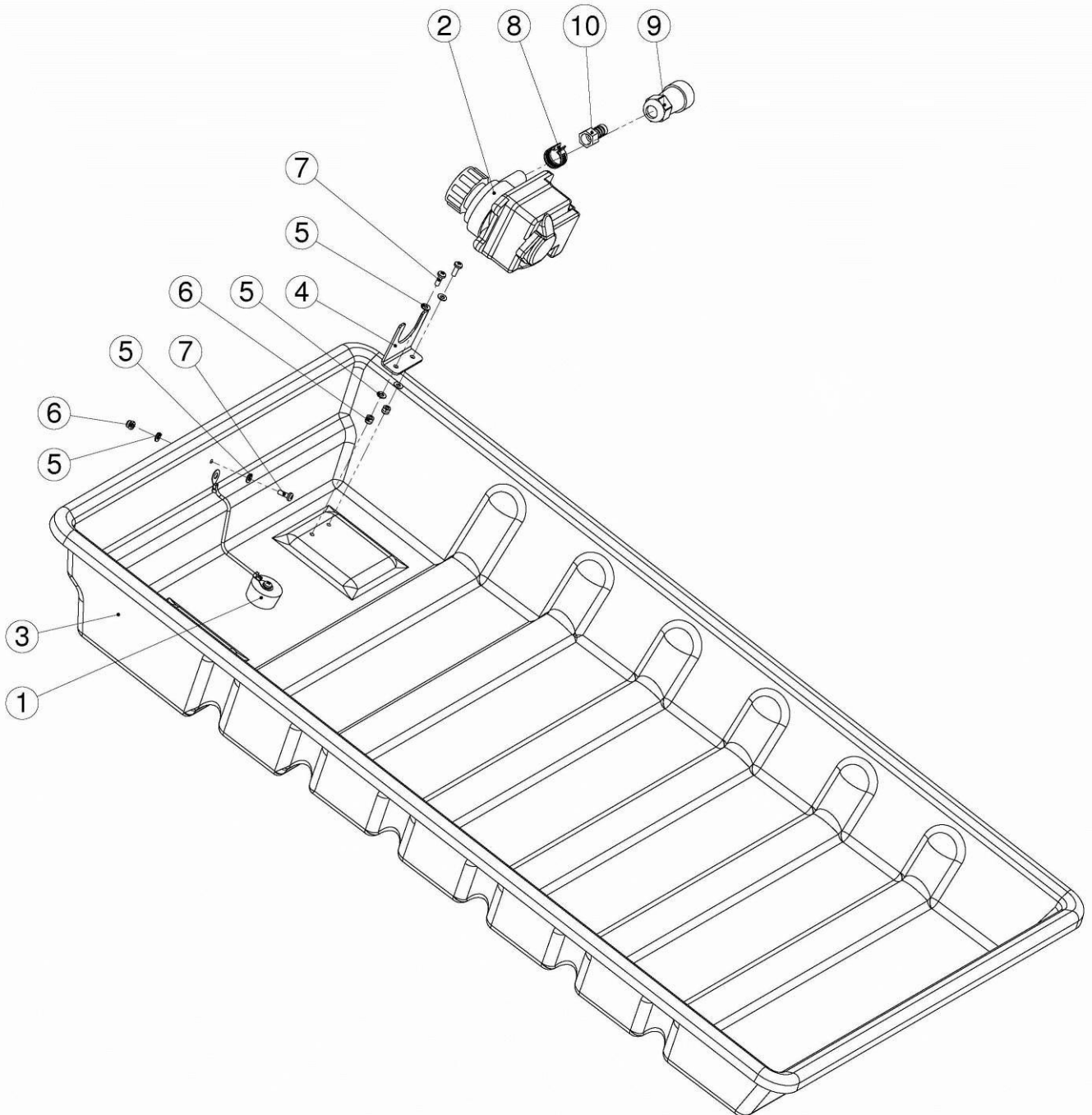
Pos.	Art.-Nr.	Qty.	Norm / Info	Bezeichnung	Description	Désignation
1	0283 350 9113	2	30x90	Aluminiumleiste (lang)	Aluminium bar (long)	Règle alu (longue)
2	0289 400 9120	1	S1	Aluminium Verbindungsstück	Aluminium connector	Pièce de liaison en alu
3	0289 350 9114	2	30x90	Aluminiumleiste (kurz)	Aluminium bar (short)	Règle alu (courte)
4	-	1	S2	Aluminium Verbindungsstück	Aluminium connector	Pièce de liaison en alu
5	0289 400 9117	1	L1	Aluminium Verbindungsstück	Aluminium connector	Pièce de liaison en alu
6	0289 400 9118	1	L2	Aluminium Verbindungsstück	Aluminium connector	Pièce de liaison en alu
10	-	4		Distanzstück Gummi	Rubber spacer	Écarteur en caoutchouc
14	-	1		Träger Führungsschiene vorne	Guiding rail support front	Support de rail de guidage avant
15	-	1		Träger Führungsschiene hinten	Guiding rail support rear	Support de rail de guidage arrière
16	0282 175 9032	2	10,5x30x2	Scheibe	Washer	Rondelle
17	0295 000 0884	2	M10x35	Sterngriffschraube	Star grip screw	Poignée-étoile
22	-	18	M8	Mutter	Hexagonal spacer	Entretoise hexagonale
23	-	2		Wasser Abtropfblech	Water drain board	Tôle égouttoir
25	-	1		Aufnahme	Acceptance	Levé
26	-	1		Aufnahme	Acceptance	Levé
28	-	1		Stützplatte	Support plate	Plaque de support
30	-	1		Stützplatte	Support plate	Plaque de support
31	-	2		Platte	Plate	Plaque
32	0289 400 9080	2	M8x25 GN 531	Flügelschraube	Wing screw	Vis à ailettes
33	-	2		Gummileiste	Rubber strip	Liston élastique
34	-	2		Verschlussstreifen	Blanking plate	Bande de fermeture
35	-	2		Verschlussstreifen	Blanking plate	Bande de fermeture



<b>Standard parts</b>						
<b>Pos.</b>	<b>Art.-Nr.</b>	<b>Qty.</b>	<b>Norm / Info</b>	<b>Bezeichnung</b>	<b>Description</b>	<b>Désignation</b>
7	-	42	A 8,4 ISO 7089	Scheibe	Washer	Rondelle
8	-	36	A8 DIN 127	Federring	Spring washer	Rondelle-ressort
9	-	16	M8x25 ISO 4762	Schraube	Screw	Vis
11	-	4	M5x16 ISO 4762	Schraube	Screw	Vis
12	-	4	A 5,3 ISO 7089	Scheibe	Washer	Rondelle
13	-	4	M5 ISO 7040	Mutter	Nut	Écrou
18	-	2	M10 DIN 982	Mutter	Nut	Écrou
19	-	6	M8x16 ISO 4017	Schraube	Screw	Vis
20	-	6	M8x25 ISO 4017	Schraube	Screw	Vis
21	-	2	M8 ISO 4032	Mutter	Nut	Écrou
24	-	8	M8x12 ISO 4017	Schraube	Screw	Vis
27	-	6	M8 ISO 7040	Mutter	Nut	Écrou
29	-	4	M8x12 ISO 4762	Schraube	Screw	Vis



## 12.3.4 Water sump cpl.



Pos.	Art.-Nr.	Qty.	Norm / Info	Content	Bezeichnung	Description	Désignation
-	-	1		Pos. 1-10	Wasserwanne kpl.	Water tank complete	Bac à eau complet

### Individually orderable

Pos.	Art.-Nr.	Qty.	Norm	Bezeichnung	Description	Désignation
9a	0289 400 9003	1	Male, ohne Außengewinde und Schutzkappe	Kupplung	Clutch	Raccord
9b	-	1	Male, mit Außengewinde und Schutzkappe	Kupplung	Clutch	Raccord
10	0281 350 0060	1	¼"	Schlauchtülle	Hose fitting	Raccord à queue crantée
-	0281 045 0112	1	6cm	Pumpengehäuse mit Sieb	Pump housing with strainer	Carter de pompe avec tamis
-	0289 400 9085	1	7cm	Pumpengehäuse mit Sieb	Pump housing with strainer	Carter de pompe avec tamis

### Available as spare parts package

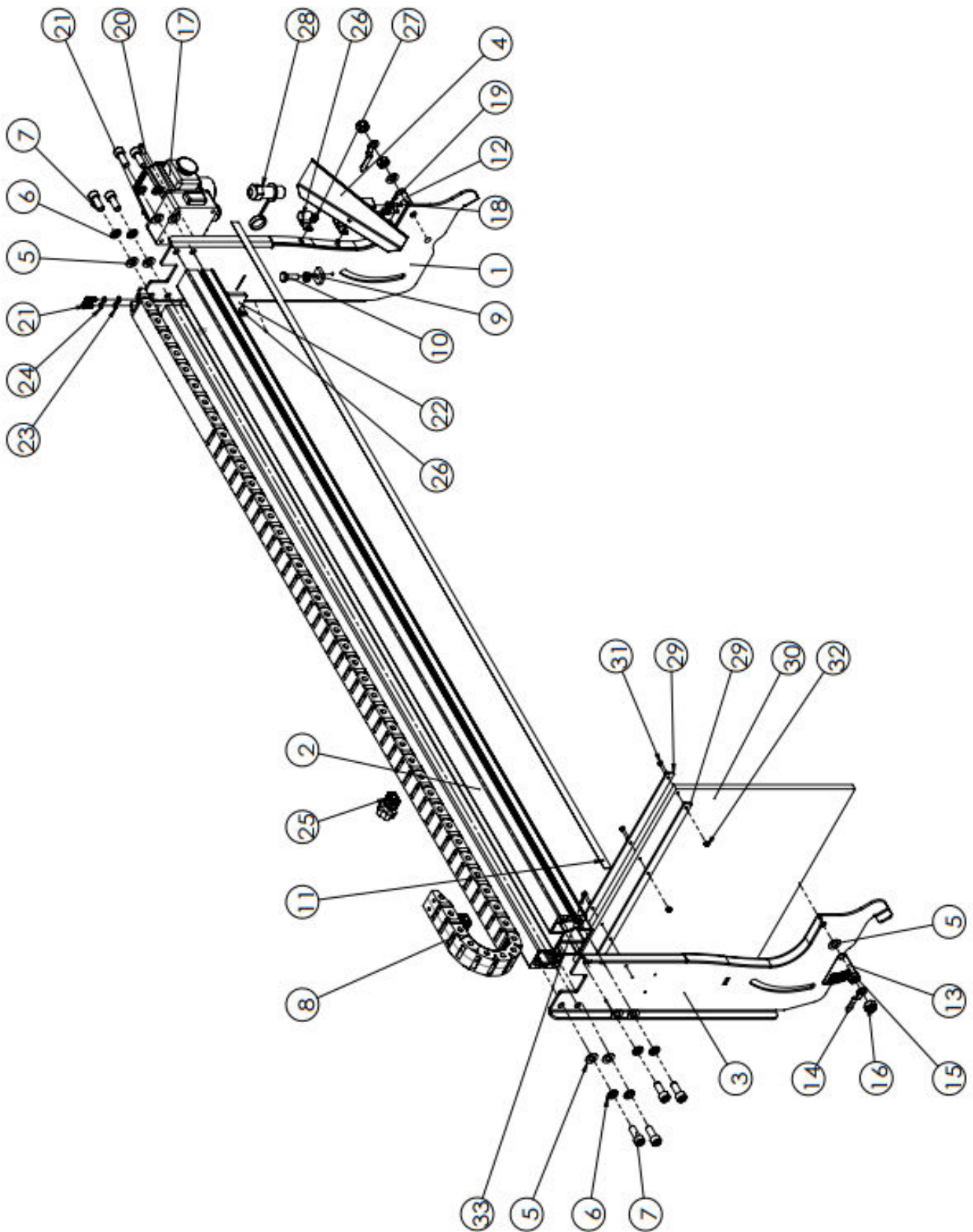
Pos.	Art.-Nr.	Qty.	Norm / Info	Content	Bezeichnung	Description	Désignation
-	0289 400 9007	1		Pos.1, 3, 4, 5, 6, 7	Wasserwanne kpl.	Water tank complete	Bac à eau complet
-	0289 400 9002	1		Pos. 2, 8, 9, 10	Wasserpumpe kpl.	Water pump complete	Pompe d'eau complète
-	0289 400 9001	1		Pos. 1, 5, 6, 7	Ablaufstopfen kpl.	Drain plug complete	Bouchon de vidange complet

### Contents of spare parts package

Pos.	Art.-Nr.	Qty.	Norm / Info	Bezeichnung	Description	Désignation
1	0289 400 9007	1		Ablaufstopfen kpl.	Stopples with rope complete	Bouchon de vidange complet
3		1		Wasserwanne	Water tank	Bac à eau
4		1		Pumpenhalter	Pump holder	Cadre support de la pompe
5		6	A4,3 ISO 7089	Scheibe	Washer	Rondelle
6		3	M4 ISO 7040	Mutter	Nut	Écrou
7		3	M4x12 ISO 7045	Schraube	Screw	Vis
2		0289 400 9002	1	230 V	Wasserpumpe	Water pump
8	1			Schelle	Clamp	Collier
9a	1		Male, ohne Außengewinde und Schutzkappe	Kupplung	Clutch	Raccord
9b	1		Male, mit Außengewinde und Schutzkappe	Kupplung	Clutch	Raccord
10	1		¼"	Schlauchtülle	Hose fitting	Raccord à queue crantée
1	0289 400 9001	1		Ablaufstopfen kpl.	Stopples with rope complete	Bouchon de vidange complet
5		2	A4,3 ISO 7089	Scheibe	Washer	Rondelle
6		1	M4 ISO 7040	Mutter	Nut	Écrou
7		1	M4x12 ISO 7045	Schraube	Screw	Vis



12.3.5 Guide bridge cpl.

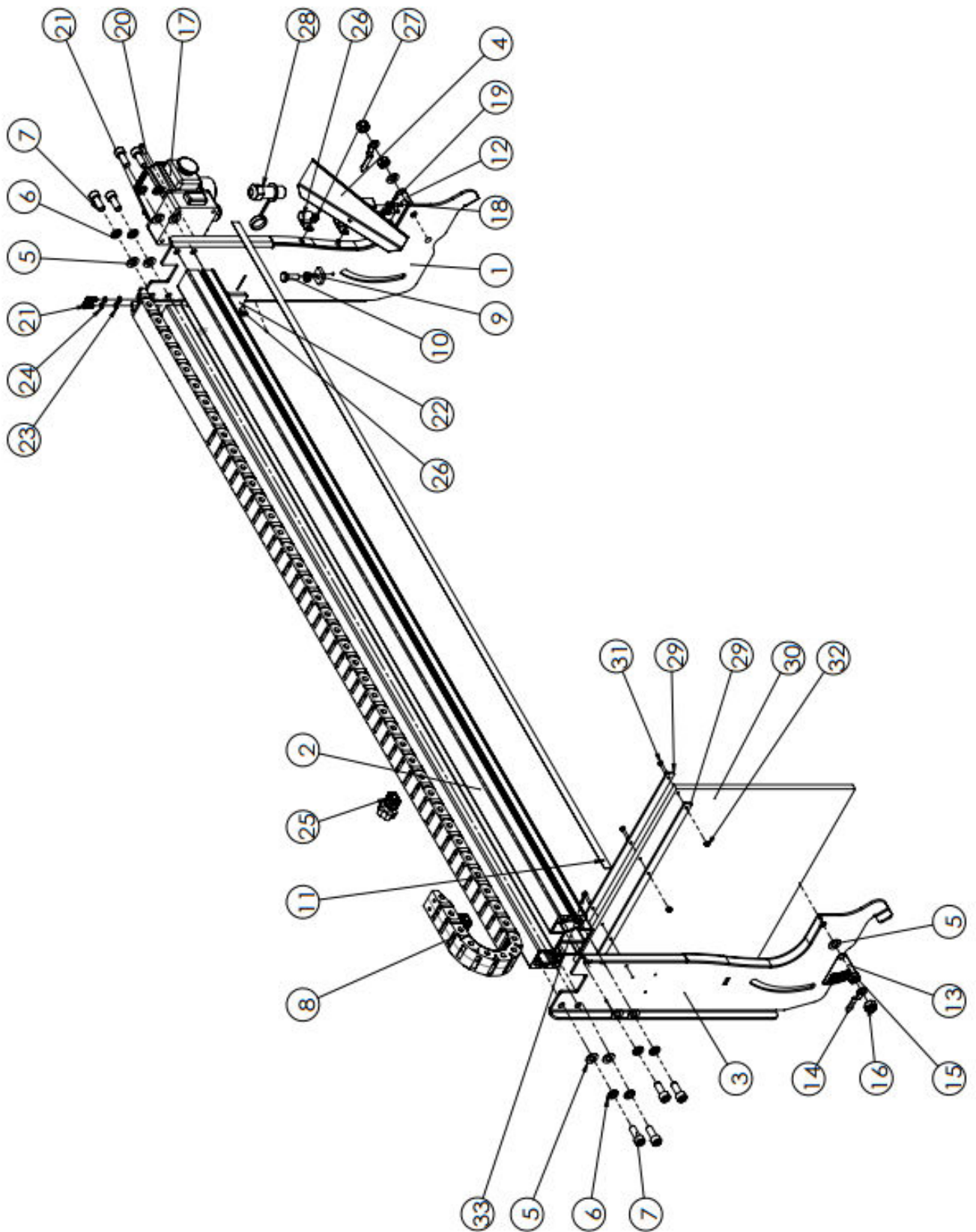


## 12 Spare parts list

Pos.	Art.-Nr.	Qty.	Norm/ Info	Content	Bezeichnung	Description	Désignation
-	-	1		<b>Pos. 1-33</b>	Führungsbrücke kpl.	Guiding bridge cpl.	Pont de guidage cpl.

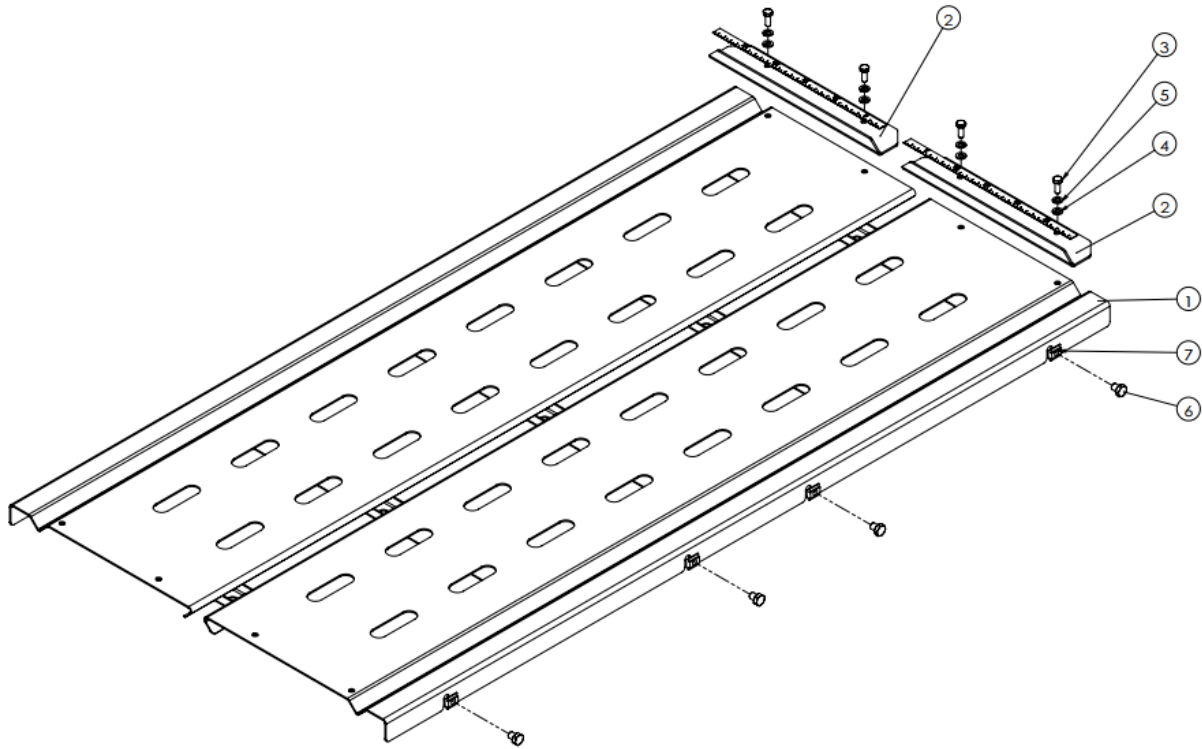
### Individually orderable

Pos.	Art.-Nr.	Qty.	Norm /Info	Bezeichnung	Description	Désignation
1	-	1		Seitenteil vorne	Side part front	Carter avant
2	<b>0289 350 9038</b>	1		Führungsschiene	Guiding rail	Glissière
3	-	1		Seitenteil hinten	Side part back	Carter arrière
4	<b>0289 350 9030</b>	1		Wassersperrplatte	Drain board	Tôle égouttoir
8	-	1		Kabelschutz Energiekette	Cable protection energy chain	Protection câble électrique
11	-	1		Skala	Scale	Échelle
12	-	1		Winkel Skala rechts	Angular scale right	Butée angulaire droite
13	-	1		Winkel Skala links	Angular scale left	Butée angulaire gauche
14	-	2		Skalenanzeiger	Scale pointer	Règle
17	<b>0289 350 9081</b>	1		Schalter / Stecker mit Laser	Switch / Plug with laser	Interrupteur / Connecteur avec laser
21	-	1		Gummipuffer	Bump rubber	Patin
25	<b>0289 350 9037</b>	2		Schneidkopf Stop	Cutting head stop	Butée de tête de coupe
26		3		Schelle	Clamp	Collier
28	<b>0289 400 9004</b>	1	Female, ohne Außengewinde und Schutzkappe	Kupplung	Clutch	Raccord
	-	1	Female, mit Außengewinde und Schutzkappe			
29	-	2		Halteblech	Holding plate	Cadre support
30	<b>0289 350 9119</b>	1		Spitzschutz	Splash guard	Bavette anti-projection



<b>Standard parts</b>						
<b>Pos.</b>	<b>Art.-Nr.</b>	<b>Qty.</b>	<b>Norm /Info</b>	<b>Bezeichnung</b>	<b>Description</b>	<b>Désignation</b>
5	-	10	A10,5 ISO 7089	Scheibe	Washer	Rondelle
6	-	8	A10 DIN 127	Federring	Spring washer	Rondelle-ressort
7	-	8	M10x25 ISO 4762	Schraube	Screw	Vis
9	-	2	M8 ISO 4032	Mutter	Nut	Écrou
10	-	2	M8x25 ISO 4017	Schraube	Screw	Vis
15	-	2	M10 ISO 4032	Mutter	Nut	Écrou
16	-	2	M10 DIN 982	Mutter	Nut	Écrou
18	-	2	M5x10 ISO 4017	Schraube	Screw	Vis
19	-	2	M5 ISO 7040	Mutter	Nut	Écrou
20	-	2	M5x45 ISO 7045	Schraube	Screw	Vis
21	-	4	M5x16 ISO 7045	Schraube	Screw	Vis
23	-	2	A 5,3 ISO 7089	Scheibe	Washer	Rondelle
24	-	2	A5 DIN 127	Federring	Spring washer	Rondelle ressort
27	-	3	D6x16 DIN 7337	Blindniete	Blind rivet	Rivet aveugle
31	-	4	M4x20 ISO 4762	Schraube	Screw	Vis
32	-	2	M4 ISO 7040	Mutter	Nut	Écrou
33	-	2	A4 DIN 127	Federring	Spring washer	Rondelle ressort

12.3.6 Cut material table steel-version cpl.



**Available as spare parts package**

Pos.	Art.-Nr.	Qty.	Norm / Info	Content	Bezeichnung	Description	Désignation
-	-	1		Pos. 1-9	Schnittguttisch kpl.	Cutting table complete	Table de travail complète

**Individually orderable**

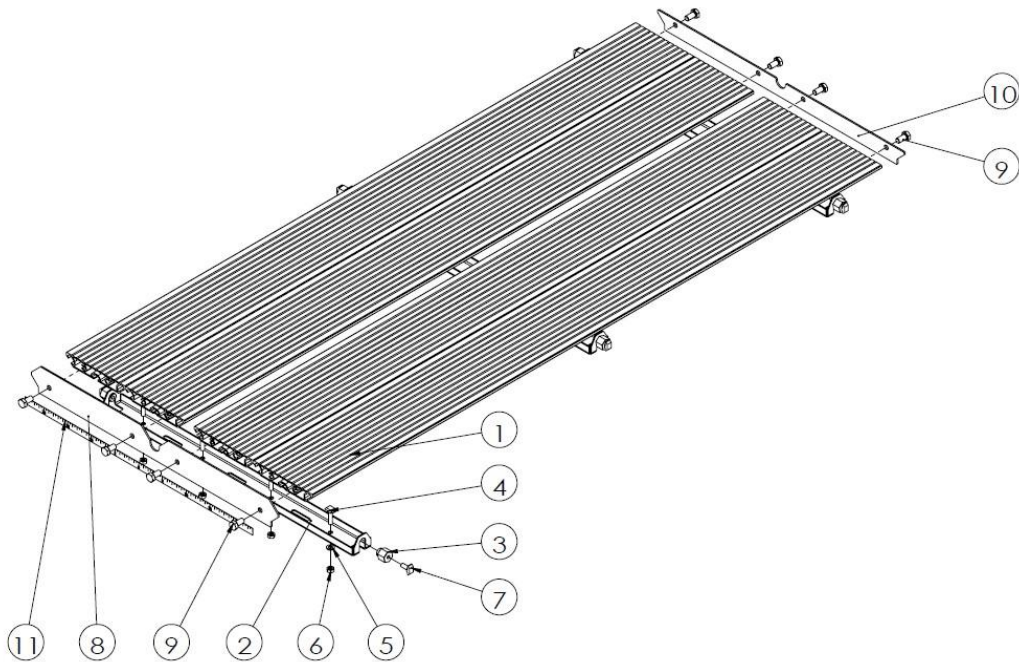
Pos.	Art.-Nr.	Qty.	Norm / Info	Bezeichnung	Description	Désignation
1	-	1		Schnittguttisch	Cutting table	Table de travail
2	-	2		Anschlagblech	Stop plate	Lame d'arrêt
7	-	8	M8	Mutter	Hexagonal spacer	Entretoise hexagonale
8	-	1		Skala	Scale	Barème
9	-	1		Skala	Scale	Barème

**Standard parts**

Pos.	Art.-Nr.	Qty.	Norm / Info	Bezeichnung	Description	Désignation
3	-	4	M6x16 ISO 4017	Schraube	Screw	Vis
4	-	4	A6,4 ISO 7089	Scheibe	Washer	Rondelle
5	-	4	A6 DIN 127	Federring	Spring washer	Rondelle-ressort
6	-	8	M8x10 ISO 4017	Schraube	Screw	Vis

## 12 Spare parts list

### 12.3.7 Cut material table aluminium-version cpl.

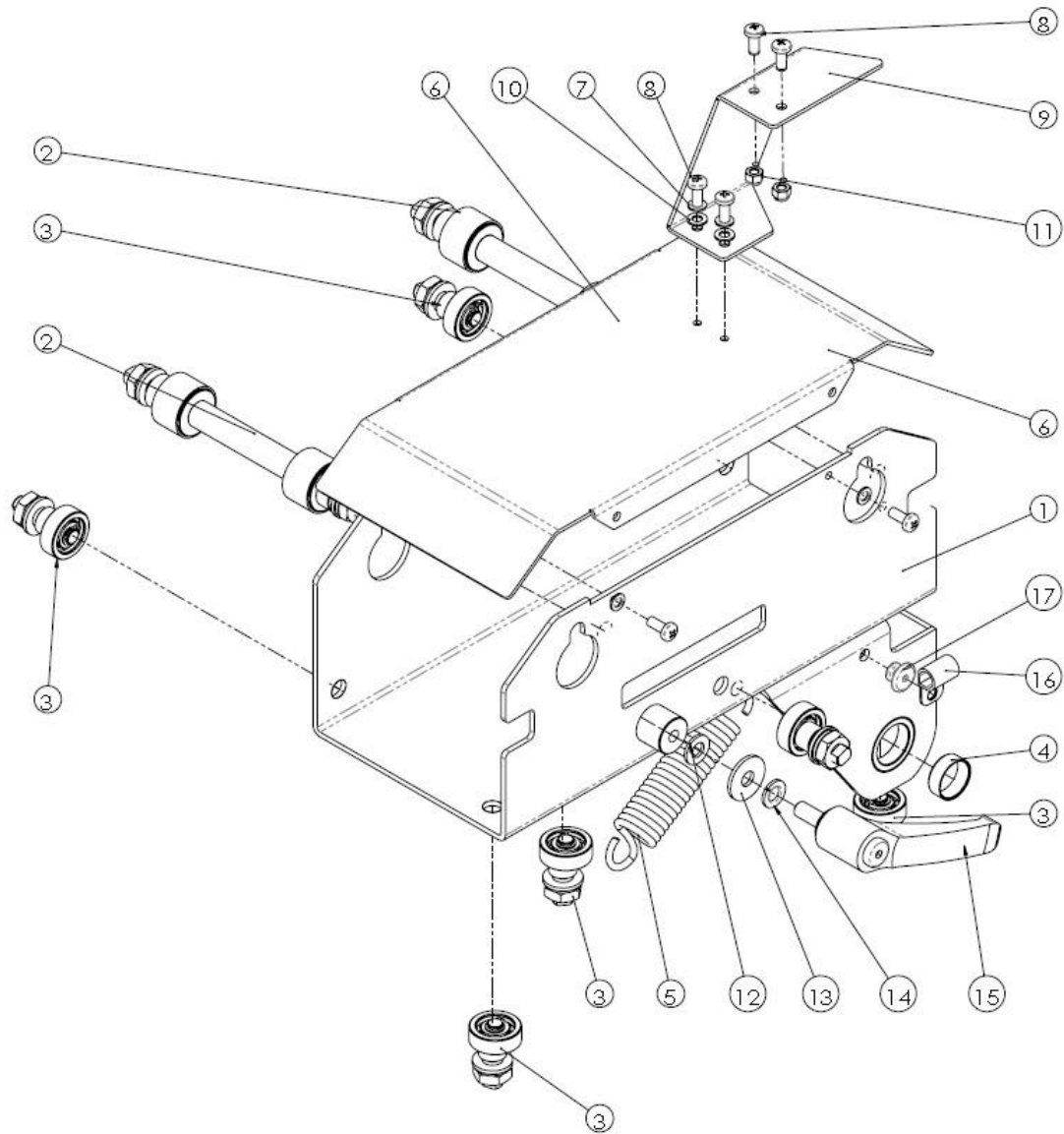


Available as spare parts package							
Pos.	Art.-Nr.	Qty.	Norm / Info	Content	Bezeichnung	Description	Désignation
-	-	1		Pos. 1-11	Schnittguttisch kpl.	Cutting table complete	Table de travail complète

Individually orderable							
Pos.	Art.-Nr.	Qty.	Norm / Info	Bezeichnung	Description	Désignation	
1	-	4		Aluminiumprofil	Aluminium profile	Profil en aluminium	
2	-	3		Aufnahme	Acceptance	Logement	
3	-	6		Mutter	Nut	Écrou	
4	-	12	M6x25	Schraube	Screw	Vis	
7	-	6	M6x16	Schraube	Screw	Vis	
8	-	1		Anschlagblech	Limit plate	Lame d'arrêt	
10	-	1		Halteblech	Holding plate	Cadre support	
11	-	1		Lineal	Rule	Règle	

Standard parts							
Pos.	Art.-Nr.	Qty.	Norm / Info	Bezeichnung	Description	Désignation	
5	-	12	A6,4 ISO 7089	Scheibe	Washer	Rondelle	
6	-	12	M6 ISO 4032	Mutter	Nut	Écrou	
9	-	8	M8x16 ISO 4017	Schraube	Screw	Vis	

## 12.3.8 Cutting head mounting cpl.



## 12 Spare parts list

Pos.	Art.-Nr.	Qty.	Norm / Info	Content	Bezeichnung	Description	Désignation
-	-	1		Pos. 1-17	Schneidkopfaufnahme kpl.	Cutter head acceptance complete	Guide tête de coupe complète

### Individually orderable

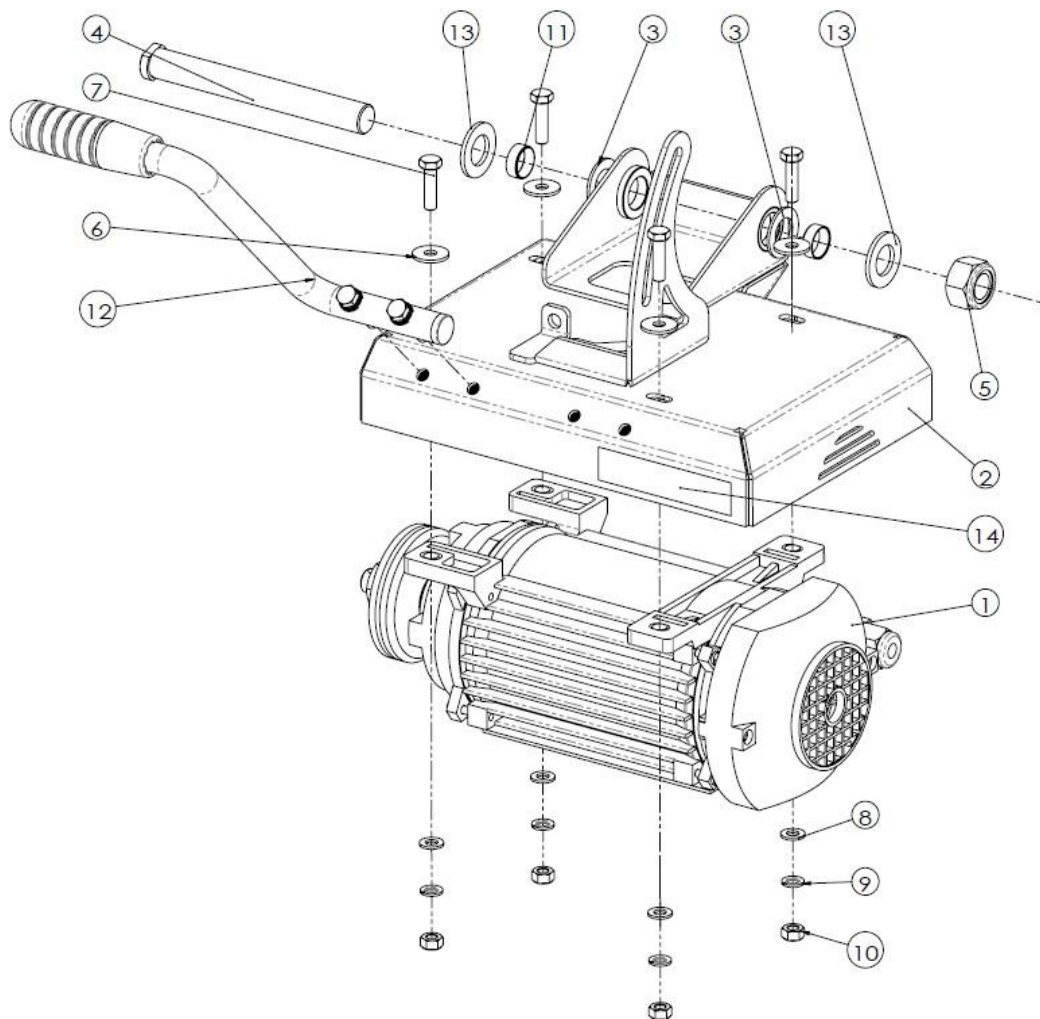
Pos.	Art.-Nr.	Qty.	Norm / Info	Bezeichnung	Description	Désignation
1	0289 350 9068	1		Schneidkopfaufnahme	Cutter head acceptance	Guide tête de coupe
2	0289 350 9033	2		Führungsspindel kpl.	Guidance spindle complete	Arbre de guidage complet
3	0289 350 9028	6		Exzenterspindel kpl.	Eccentric spindle complete	Arbre excentrique complet
4	0289 350 9022	2	GSM 2022-08	Gleitlager	Bush bearing	Roulement coulissant
5	0289 350 9105	1		Feder	Spring	Ressort
6	-	1		Abdeckung	Cover	Coiffe
9	0289 350 9069	1		Kabelbefestigung	Cable clip fixing	Fixation câble
15	0289 200 9023	1	GN602-78-M8-20-SW	Klemmhebel	Clamp lever	Levier de serrage
16	-	1		Schelle	Clamp	Collier

### Standard parts

Pos.	Art.-Nr.	Qty.	Norm / Info	Bezeichnung	Description	Désignation
7	-	6	A5 DIN 127	Federring	Spring washer	Rondelle ressort
8	-	8	M5x12 ISO 7045	Schraube	Screw	Vis
10	-	6	A 5,3 ISO 7089	Scheibe	Washer	Rondelle
11	-	2	M5 ISO 7040	Mutter	Nut	Écrou
12	-	1	A 8,4 ISO 7089	Scheibe	Washer	Rondelle
13	-	1	8,4 ISO 7093	Scheibe	Washer	Rondelle
14	-	1	A8 DIN 127	Federring	Spring washer	Rondelle-ressort
17	-	1	D6x16 DIN 7337	Blindniete	Blind rivet	Rivet aveugle



## 12.3.9 Cutting head cpl.



## 12 Spare parts list

Pos.	Art.-Nr.	Qty.	Norm / Info	Content	Bezeichnung	Description	Désignation
-	-	1		Pos. 1-14	Schneidkopf kpl.	Cutter head complete	Tête de coupe complète

### Individually orderable

Pos.	Art.-Nr.	Qty.	Norm / Info	Bezeichnung	Description	Désignation
1	0289 400 9005	1	230 V	Motor	Motor	Moteur
-	0289 400 9017	1	230V	Kondensator	Condenser	Condensateur
-	0289 400 9096	1	230V	Lüfterdeckel	Fan cover	Couvercle de ventilateur
2	-	1		Schneidkopf	Cutter head	Tête de coupe
3	-	2		Scheibe	Washer	Rondelle
4	-	1		Schneidkopfwelle	Cutting head axle	Arbre de coupe
11	0289 350 9022	2	GSM 2022-08	Gleitlager	Bush bearing	Roulement coulissant
12	0289 350 9070	1		Schneidkopfgriff kpl.	Cutter head handle complete	Poignée de la tête de coupe complète
14	0289 400 9105	1		Aufkleber	Sticker	Autocollant

### Standard parts

Pos.	Art.-Nr.	Qty.	Norm / Info	Bezeichnung	Description	Désignation
5	-	1	M20 ISO 7040	Mutter	Nut	Écrou
6	-	4	8,4 ISO 7093	Scheibe	Washer	Rondelle
7	-	4	M8x30 ISO 4017	Schraube	Screw	Vis
8	-	4	A 8,4 ISO 7089	Scheibe	Washer	Rondelle
9	-	4	A8 DIN 127	Federring	Spring washer	Rondelle-ressort
10	-	4	M8 ISO 4032	Mutter	Nut	Écrou
13	-	2	A 21 ISO 7089	Scheibe	Washer	Rondelle

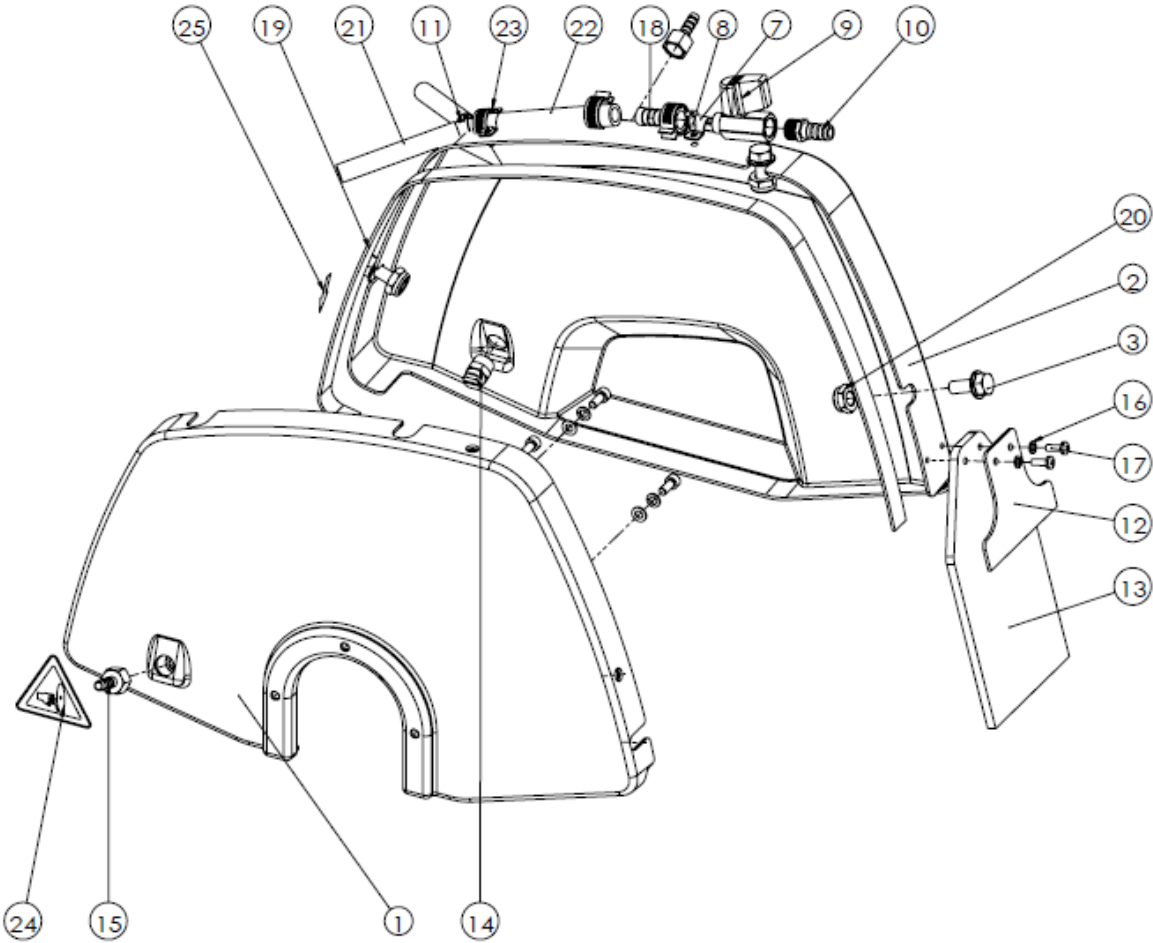
### Available as spare parts package

Pos.	Art.-Nr.	Qty.	Norm / Info	Content	Bezeichnung	Description	Désignation
-	0289 400 9020	1			Flansche kpl.	Flanges complete	Brides complet

### Contents of spare parts package

Pos.	Art.-Nr.	Qty.	Norm / Info	Bezeichnung	Description	Désignation
-	0289 400 9020	1	M20-Links	Mutter	Nut	Ecrou
-		1		Aussenflansch	Outer flange	Flasque extérieur
-		1		Innenflansch	Inner flange	Flasque intérieur
-		1		Passfeder	Key	Clavette

12.3.10 Protection cover cpl.



## 12 Spare parts list

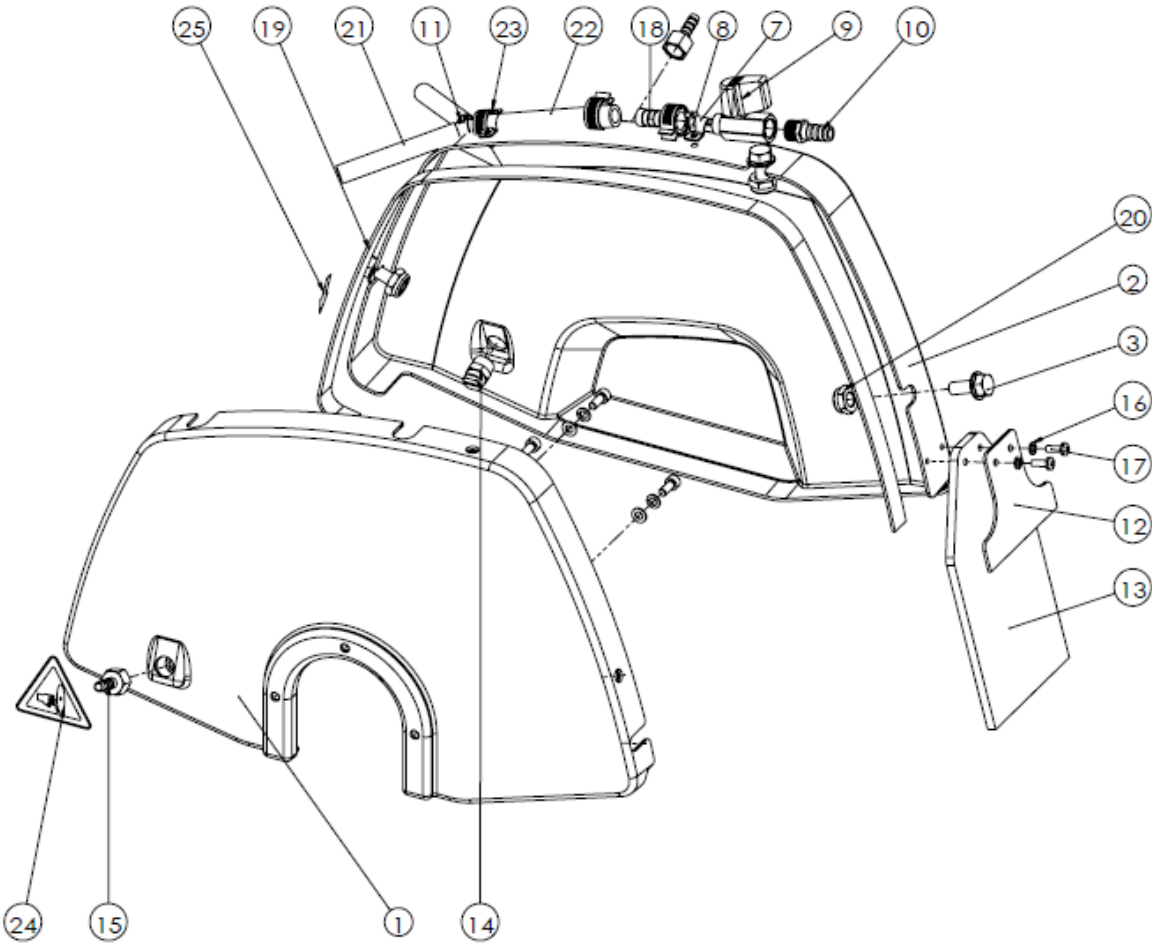
Pos.	Art.-Nr.	Qty.	Norm / Info	Content	Bezeichnung	Description	Désignation
-	0289 350 9018	1		Pos. 1-25	Schutzhaube kpl.	Blade guard complete	Capot protecteur complète

### Individually orderable

Pos.	Art.-Nr.	Qty.	Norm / Info	Bezeichnung	Description	Désignation
1	-	1		SchutzhaubeTeil 1	Blade guard 1	Capot protecteur 1
2	-	1		Schutzhaube Teil 2	Blade guard 2	Capot protecteur 2
9	0289 400 9025	1	1/4"	Kugelhahn	Ball valve	Robinet à rotule
10	0295 000 0584	1		Schlauchtülle	Hose connector	Tétine (Tuyau)
11	0289 350 9041	1		Y-Verteiler	Y-Distribution	Y-Distributeur
12	0282 175 9028	1		Aufnahme Spritzschutz	Splash guard acceptance	Logement bavette anti-projection
13	0289 350 9064	1		Spritzschutz	Splash guard	Bavette anti-projection
14	0282 400 9024	2		Wasserdüse	Water nozzle	Buse à eau
15	0289 400 9073	2		Schlauchtülle	Hose connector	Tétine (Tuyau)
18	0281 350 0060	1	1/4"	Schlauchtülle	Hose connector	Tétine (Tuyau)
19	-	1		SchutzhaubeTeil 3	Blade guard 3	Capot protecteur 3
21	0282 130 0523	2	Ø6x2x315	Schlauch	Hose	Tuyau
22	0282 175 9072	1		Schlauch	Hose	Tuyau
24	-	1		Aufkleber	Sticker	Autocollant
25	0282 175 9031	1	Pfeil	Aufkleber	Sticker	Autocollant
-	0282 400 9036	3		1-Ohr Schelle	Clamp	Collier
-	0282 400 9037	4		1-Ohr Schelle	Clamp	Collier

### Standard parts

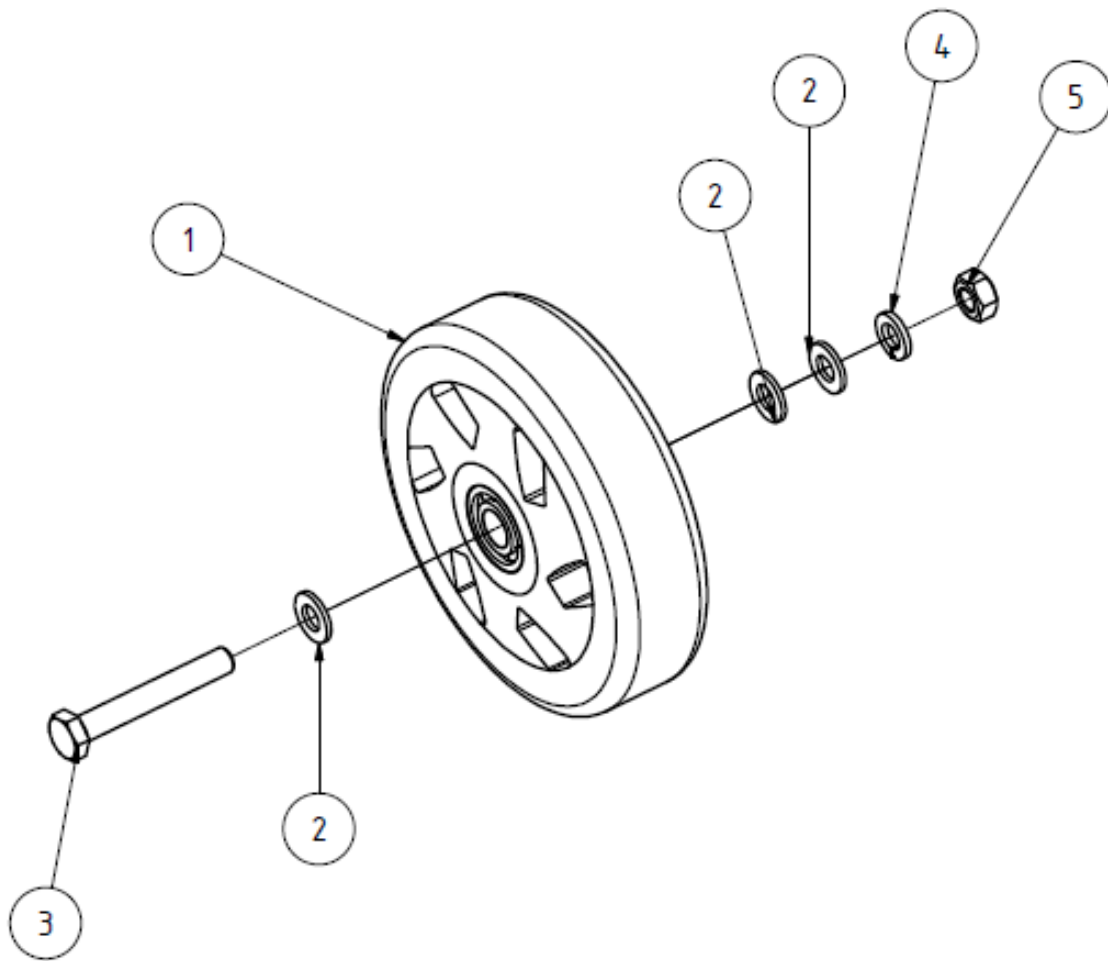
Pos.	Art.-Nr.	Qty.	Norm / Info	Bezeichnung	Description	Désignation
3		3	M8x20 DIN 6921	Schraube	Screw	Vis
4	-	3	A5,4 ISO 7089	Scheibe	Washer	Rondelle
5	-	3	A5 DIN 127	Federring	Spring washer	Rondelle-ressort
6	-	3	M5x12 ISO 4762	Schraube	Screw	Vis
16	-	2	A4 DIN 127	Federring	Spring washer	Rondelle-ressort
17	-	2	M4x12 ISO 7045	Schraube	Screw	Vis
20	-	3	M8 ISO 10511	Mutter	Nut	Écrou



Available as spare parts package							
Pos.	Art.-Nr.	Qty.	Norm / Info	Content	Bezeichnung	Description	Désignation
-	0289 350 9020	1		Pos. 7- 11, 14, 15, 18, 21-23	Wasseranschluss kpl.	Water connection complete	Prise d'eau complet

Contents of spare parts package							
Pos.	Art.-Nr.	Qty.	Norm / Info	Bezeichnung	Description	Désignation	
7		2		Schlauchschelle	Hose clamp	Collier	
8		2	D4x8 DIN 7337	Blindniete	Blind rivet	Rivet aveugle	
9		1	1/4"	Kugelhahn	Ball valve	Robinet à rotule	
10		1		Schlauchtülle	Hose connector	Tétine (Tuyau)	
11		1		Y-Verteiler	Y-Distribution	Y-Distributeur	
14		2		Wasserdüse	Water nozzle	Buse à eau	
15		2		Schlauchtülle	Hose connector	Tétine (Tuyau)	
18		1	1/4"	Schlauchtülle	Hose connector	Tétine (Tuyau)	
21		2	Ø6x2x315	Schlauch	Hose	Tuyau	
22		1		Schlauch	Hose	Tuyau	
23		3		Schlauchschelle	Hose clamp	Collier	

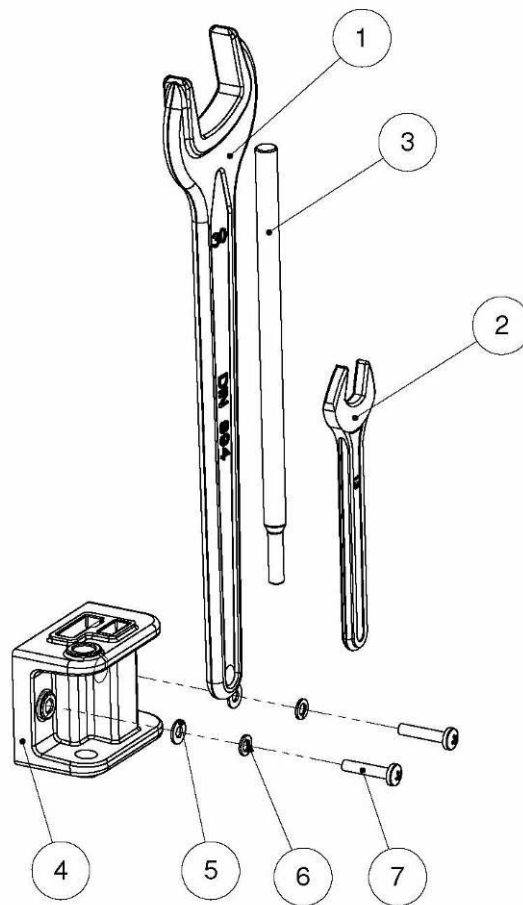
## 12.3.11 Transport wheel cpl.



Available as spare parts package							
Pos.	Art.-Nr.	Qty.	Norm / Info	Content	Bezeichnung	Description	Désignation
-	0289 400 9026	1		Pos.1-5	Transporträder kpl.	Transport wheel complete	Roue de transport complète

Contents of spare parts package							
Pos.	Art.-Nr.	Qty.	Norm / Info	Bezeichnung	Description	Désignation	
1	0289 400 9026	1		Transportrad	Transport wheel	Roue de transport	
2		3	A8,4 ISO 7089	Scheibe	Washer	Rondelle	
3		1	M8x55 ISO 4014	Schraube	Screw	Vis	
4		1	A8 DIN 127	Federring	Spring washer	Rondelle-ressort	
5		1	M8 ISO 4032	Mutter	Nut	Écrou	

12.3.12 Tool holder with tool

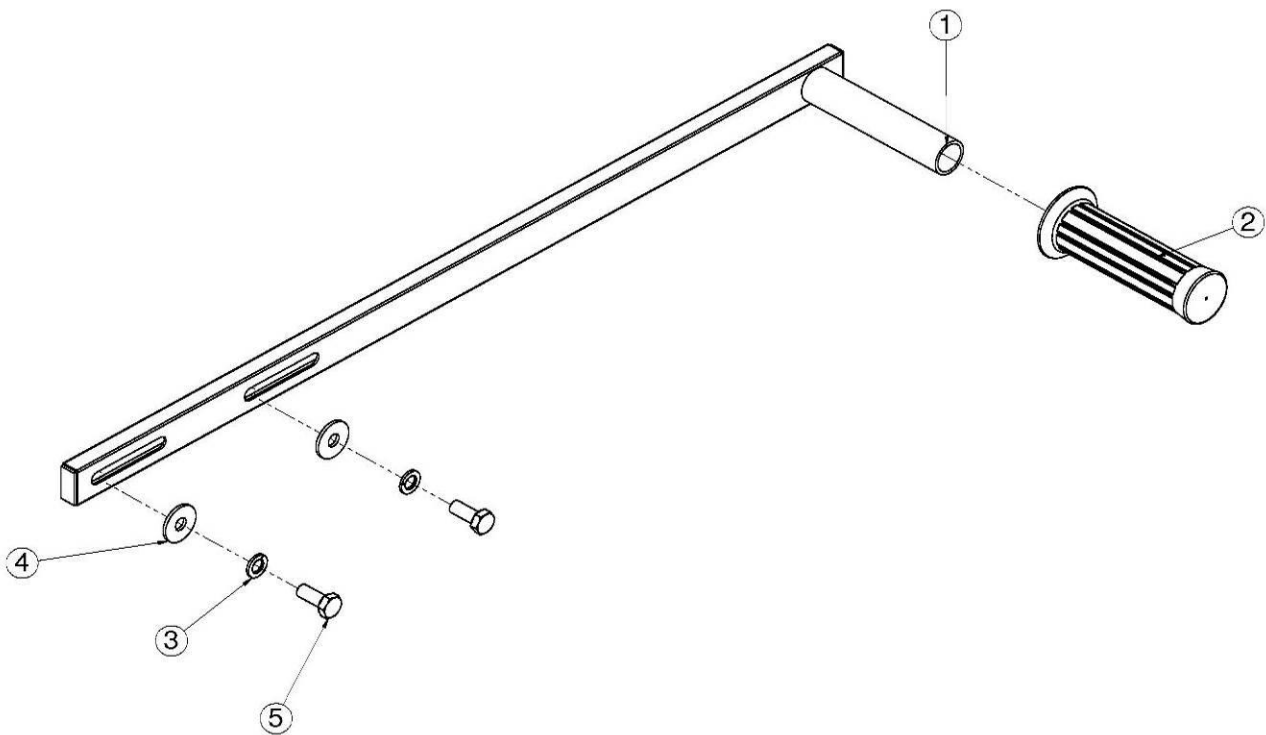


Available as spare parts package							
Pos.	Art.-Nr.	Qty.	Norm / Info	Content	Bezeichnung	Description	Désignation
-	0289 350 9017	1		Pos. 1-7	Werkzeughalter mit Werkzeug	Tool holder with tools	Porte-outil avec l'outil

Contents of spare parts package						
Pos.	Art.-Nr.	Qty.	Norm / Info	Bezeichnung	Description	Désignation
1	0289 350 9017	1	SW 30	Maulschlüssel	Wrench	Clé
2		1	SW 13	Maulschlüssel	Wrench	Clé
3		1		Werkzeug	Tool	Outil
4		1		Werkzeughalter	Tool holder	Porte-outil
5		2	A4,3 ISO 7089	Scheibe	Washer	Rondelle
6		2	A4 DIN 127	Federring	Spring washer	Rondelle-ressort
7		2	M4x12 ISO 7045	Schraube	Screw	Vis



## 12.3.13 Long handle



### Available as spare parts package

Pos.	Art.-Nr.	Qty.	Norm / Info	Content	Bezeichnung	Description	Désignation
-	0289 350 9034	1		Pos. 1-5	Griff lang kpl.	Handle long complete	Poignée longue complète

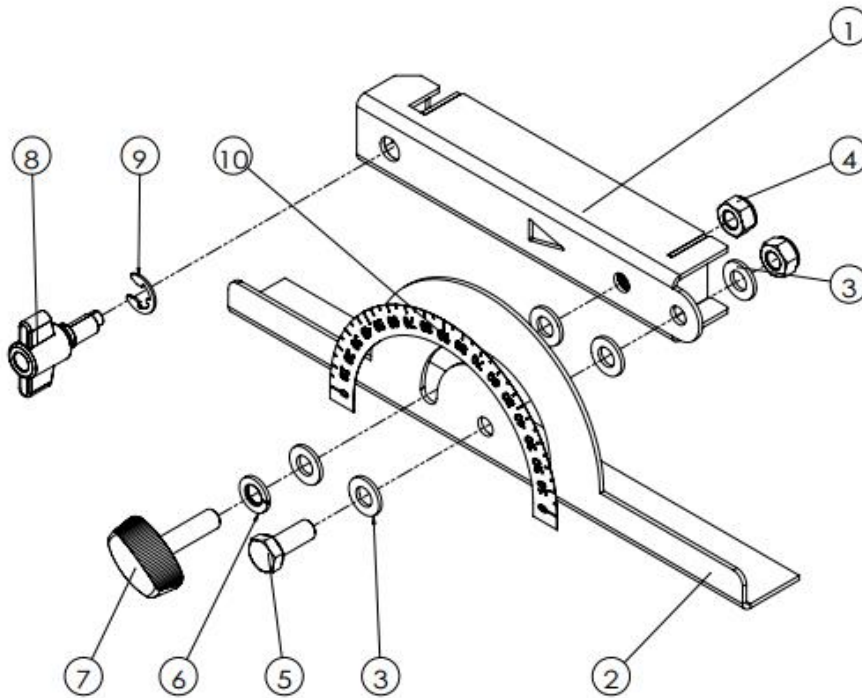
### Individually orderable

Pos.	Art.-Nr.	Qty.	Norm / Info	Bezeichnung	Description	Désignation
2	0282 017 9022	1		Handgriff	Handle grip	Poignée

### Contents of spare parts package

Pos.	Art.-Nr.	Qty.	Norm / Info	Bezeichnung	Description	Désignation
1	0289 350 9034	1		Griff lang	Handle long	Poignée longue
2		1		Handgriff	Handle grip	Poignée
3		2	A8 DIN 127	Federring	Spring washer	Rondelle ressort
4		2	8,4 ISO 7093	Scheibe	Washer	Rondelle
5		2	M8x5 ISO 4017	Schraube	Screw	Vis

12.3.14 Stop bracket cpl.

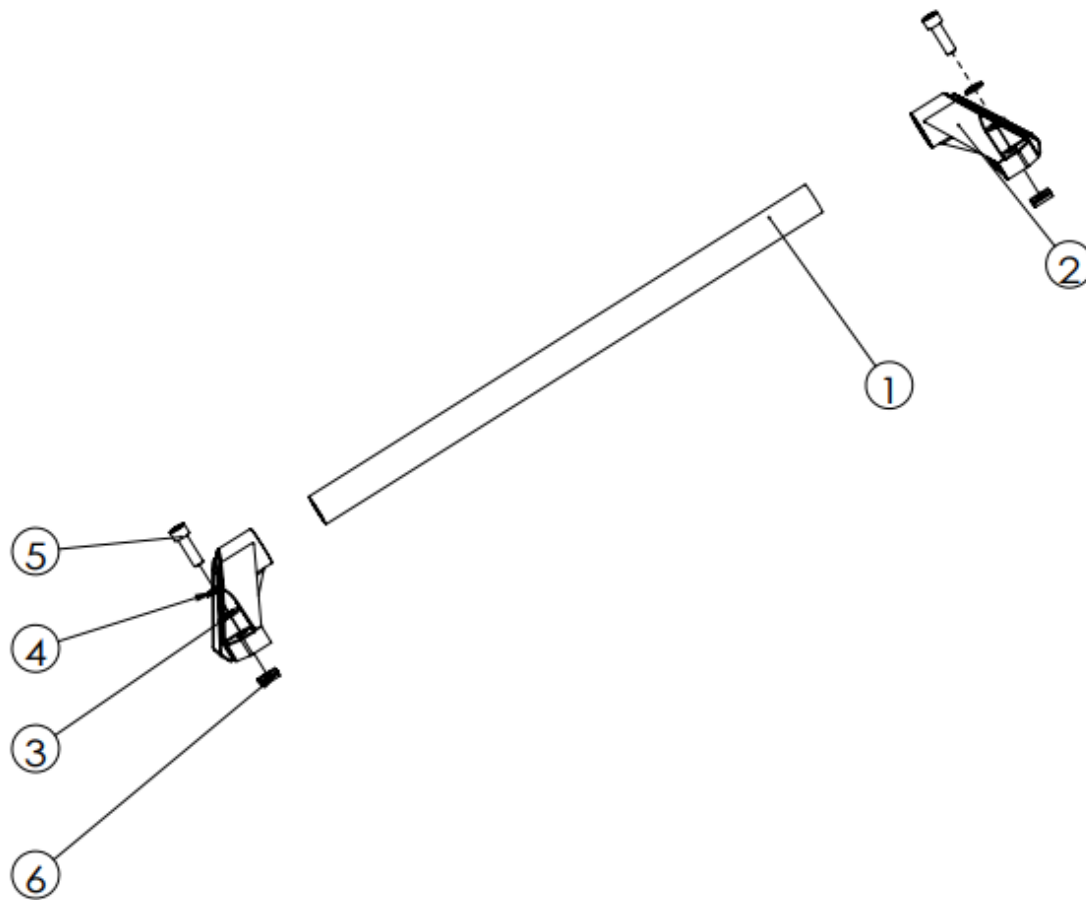


Available as spare parts package							
Pos.	Art.-Nr.	Qty.	Norm / Info	Content	Bezeichnung	Description	Désignation
-	0289 200 9013	1		Pos. 1-10	Anschlagwinkel kpl.	Back square complete	Équerre complète

Individually orderable							
Pos.	Art.-Nr.	Qty.	Norm / Info	Bezeichnung	Description	Désignation	
7	0289 400 9080	1	M8x25 GN 531	Flügelschraube	Wing screw	Vis à ailettes	

Contents of spare parts package							
Pos.	Art.-Nr.	Qty.	Norm	Bezeichnung	Description	Désignation	
1	0289 200 9013	1		Aufnahme	Acceptance	Logement	
2		1		Anschlagwinkel	Back square	Équerre	
3		5	A8,4 ISO 7089	Scheibe	Washer	Rondelle	
4		2	M8 ISO 7040	Mutter	Nut	Écrou	
5		1	M8x20 ISO 4017	Schraube	Screw	Vis	
6		1	A8 DIN 127	Federring	Spring washer	Rondelle-ressort	
7		1	M8x25 GN 531	Flügelschraube	Wing screw	Vis à ailettes	
8		1		Exzentergriff	Eccentric handle	Poignée excentrique	
9		1	8 DIN 6799	Sicherungsscheibe	Lock washer	Rondelle d'arrêt	
10		1		Skala	Scale	Cadran	

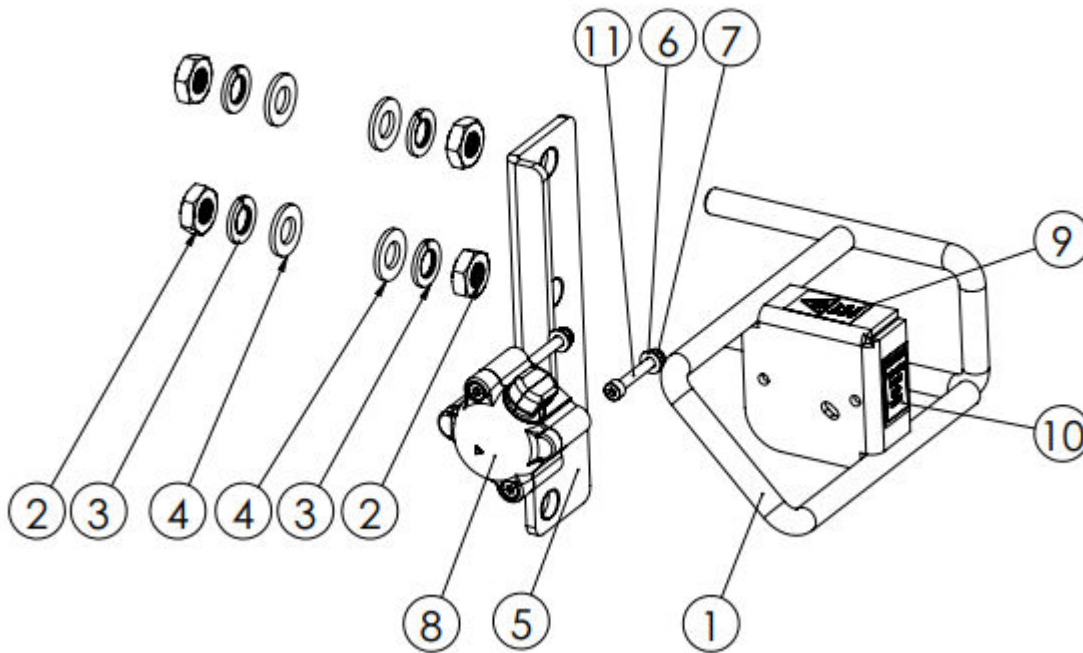
## 12.3.15 Transport handle cpl.



Available as spare parts package							
Pos.	Art.-Nr.	Qty.	Norm / Info	Content	Bezeichnung	Description	Désignation
-	-	1		Pos. 1-6	Transportgriff kpl.	Transport handle complete	Poignée de transport complète

Contents of spare parts package							
Pos.	Art.-Nr.	Qty.	Norm / Info	Bezeichnung	Description	Désignation	
1	-	1		Griffstange	Handle bar	Barres d'appui	
2		2		Griffaufnahme	Handle acceptance	Levé de la barre	
3		4	A8,4 ISO 7089	Scheibe	Washer	Rondelle	
4		4	A8 DIN 127	Federring	Spring washer	Rondelle-ressort	
5		4	M8x25 ISO 4762	Schraube	Screw	Vis	
6		4	M8	Mutter	Hexagonal spacer	Entretoise hexagonale	

12.3.16 Laser



Pos.	Art.-Nr.	Qty.	Norm / Info	Content	Bezeichnung	Description	Désignation
-	-	1		Pos. 1-11	Laser kpl.	Laser complete	Laser complet

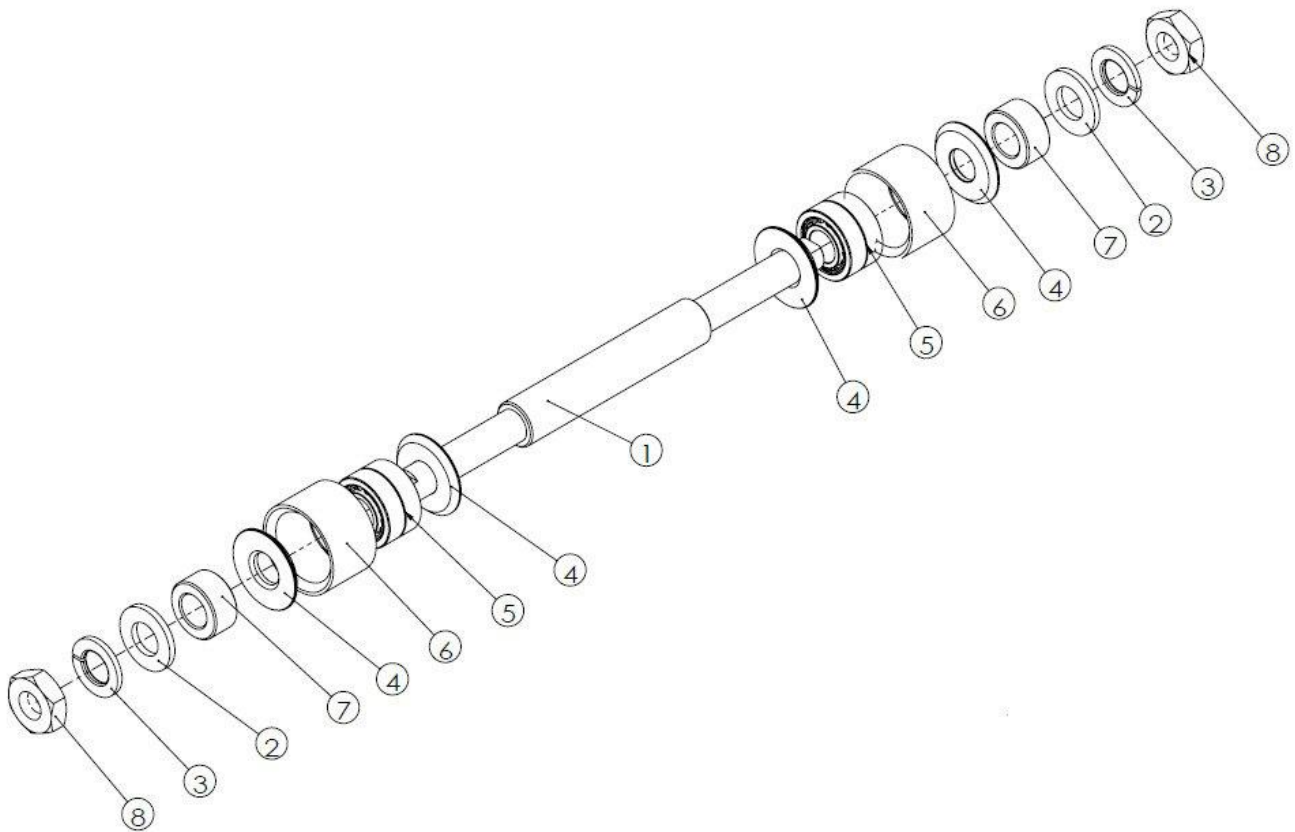
**Individually orderable**

Pos.	Art.-Nr.	Qty.	Norm / Info	Bezeichnung	Description	Désignation
1	-	1		Aufnahme	Acceptance	Logement
5	-	1		Halteblech	Holding plate	Cadre support
8	0289 400 9113	1		Laser	Laser	Laser
9	-	1		Aufkleber	Sticker	Autocollant
10	-	1		Aufkleber	Sticker	Autocollant

**Standard parts**

Pos.	Art.-Nr.	Qty.	Norm / Info	Bezeichnung	Description	Désignation
2	-	4	M10 DIN 936	Mutter	Nut	Écrou
3	-	4	A10 DIN 127	Federring	Spring washer	Rondelle-ressort
4	-	4	A10,5 ISO 7089	Scheibe	Washer	Rondelle
6	-	2	A4,3 ISO 7089	Scheibe	Washer	Rondelle
7	-	2	M4 ISO 7040	Mutter	Nut	Écrou
11	-	2	M4x30 ISO 4762	Schraube	Screw	Vis

## 12.3.17 Guide spindle

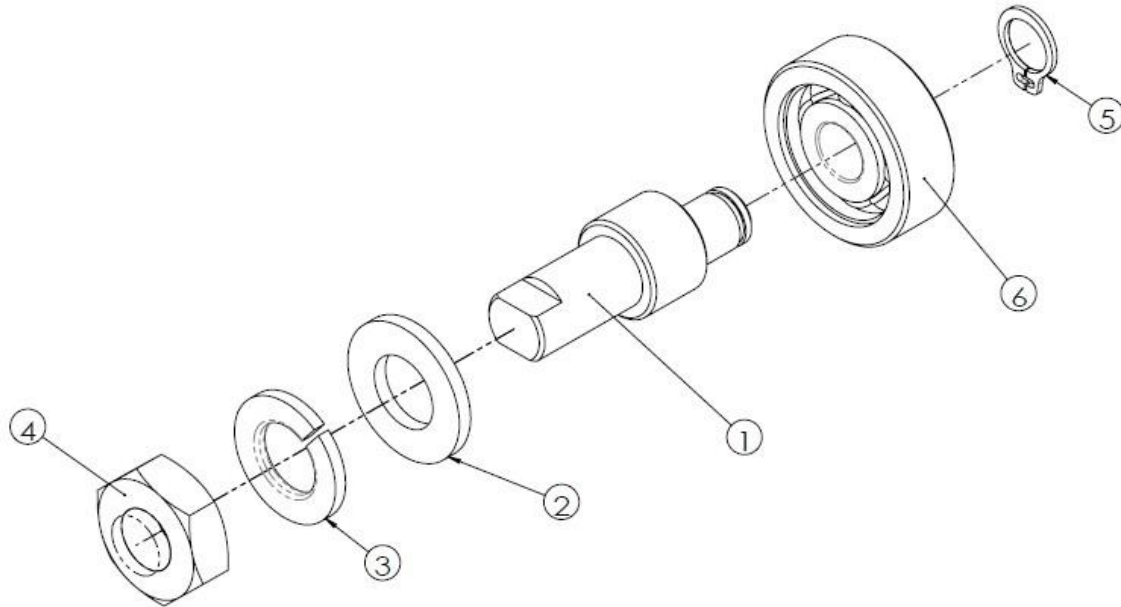


Available as spare parts package							
Pos.	Art.-Nr.	Qty.	Norm / Info	Content	Bezeichnung	Description	Désignation
-	0289 350 9033	2		Pos. 1-8	Führungsspindel kpl.	Guidance spindle complete	Arbre de guidage complet.

Individually orderable							
Pos.	Art.-Nr.	Qty.	Norm / Info	Bezeichnung	Description	Désignation	
5	0289 350 9067	2	Ø10xØ22 NA 4900.2RS DIN 628	Nadellager	Needle bearing	Roulement à aiguilles	

Contents of spare parts package							
Pos.	Art.-Nr.	Qty.	Norm / Info	Bezeichnung	Description	Désignation	
1	0289 350 9033	1		Führungsspindel	Guidance spindle	Arbre de guidage	
2		2	A10,5 ISO 7089	Scheibe	Washer	Rondelle	
3		2	A10 DIN 127	Federring	Spring washer	Rondelle-ressort	
4		4		Scheibe	Washer	Rondelle	
5		2	Ø10xØ22	Nadellager	Needle bearing	Roulement à aiguilles	
6		2		Buchse	Bushing	Douille	
7		2	10,5x18x8,5	Lagerbuchse	Bushing bearing	Garniture de coussinet	
8		2	M10 ISO 4035	Mutter	Nut	Ecrou	

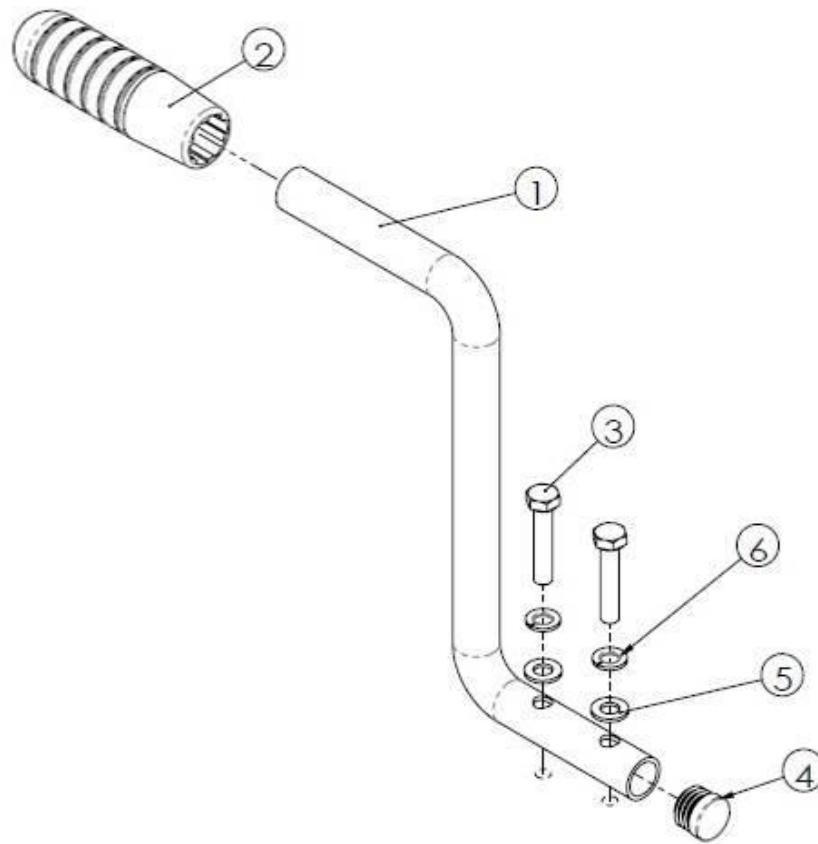
12.3.18 Eccentric spindle



Available as spare parts package							
Pos.	Art.-Nr.	Qty.	Norm / Info	Content	Bezeichnung	Description	Désignation
-	0289 350 9028	1		Pos. 1-6	Exzentrerspindel kpl.	Eccentric spindle complete	Arbre excentrique complet

Contents of spare parts package							
Pos.	Art.-Nr.	Qty.	Norm / Info	Bezeichnung	Description	Désignation	
1	0289 350 9028	1		Exzentrerspindel	Eccentric spindle	Arbre excentrique	
2		1	A10,5 ISO 7089	Scheibe	Washer	Rondelle	
3		1	A10 DIN 127	Federring	Spring washer	Rondelle-ressort	
4		1	M10 ISO 4035	Mutter	Nut	Ecrou	
5		1	8x0,8 DIN 471	Sicherungsring	Circlip	Circlip	
6		1		Lager	Bearing	Coussinet	

## 12.3.19 Cutting head handle



### Available as spare parts package

Pos.	Art.-Nr.	Qty.	Norm / Info	Content	Bezeichnung	Description	Désignation
-	-	1		Pos. 1-6	Schneidkopfgriff kpl.	Cutter head handle complete	Poignée de la tête de Coupe complète

### Individually orderable

Pos.	Art.-Nr.	Qty.	Norm / Info	Bezeichnung	Description	Désignation
2	-	1		Handgriff	Handle grip	Poignée
4	0282 170 6165	1	Ø20	Stopfen	Stopple	Bouchon

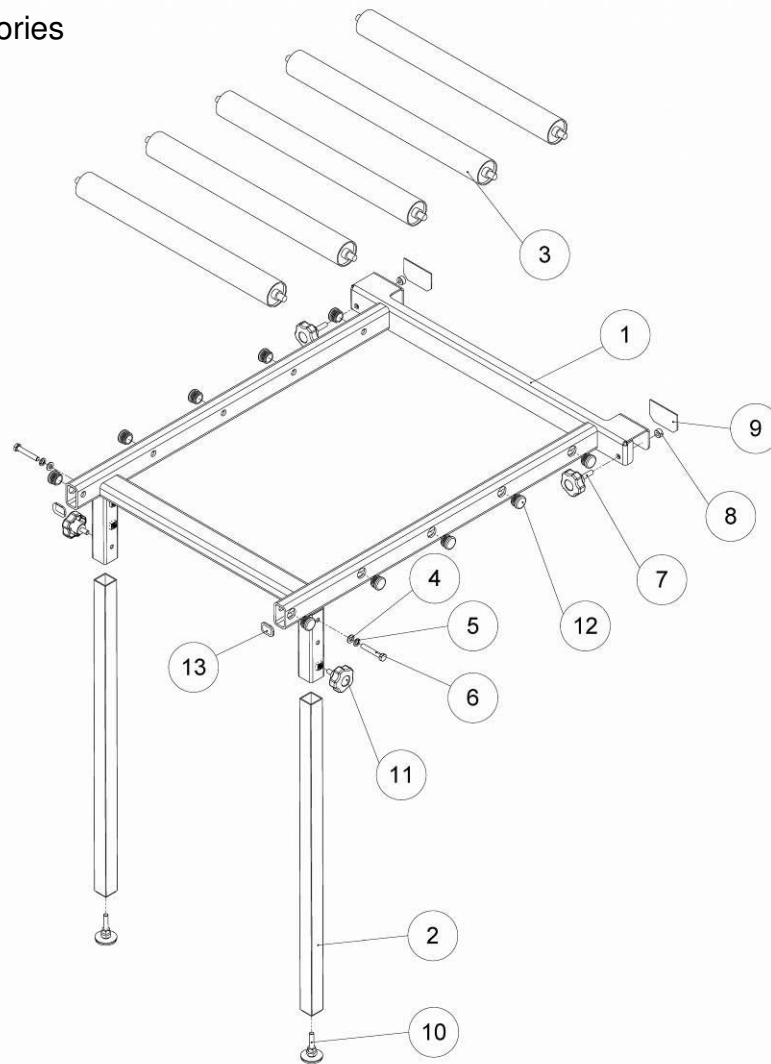
### Contents of spare parts package

Pos.	Art.-Nr.	Qty.	Norm / Info	Bezeichnung	Description	Désignation
1	-	1		Griffstange	Handle bar	Barres d'appui
2		1		Handgriff	Handle grip	Poignée
3		2	M8x40 ISO 4017	Schraube	Screw	Vis
4		1	Ø20	Stopfen	Stopple	Bouchon
5		2	A8,4 ISO 7089	Scheibe	Washer	Rondelle
6		2	A8 DIN 127	Federring	Spring washer	Rondelle-ressort

## 12 Spare parts list

### 12.4 Optional accessories

#### 12.4.1 Roll jib



#### Available as spare parts package

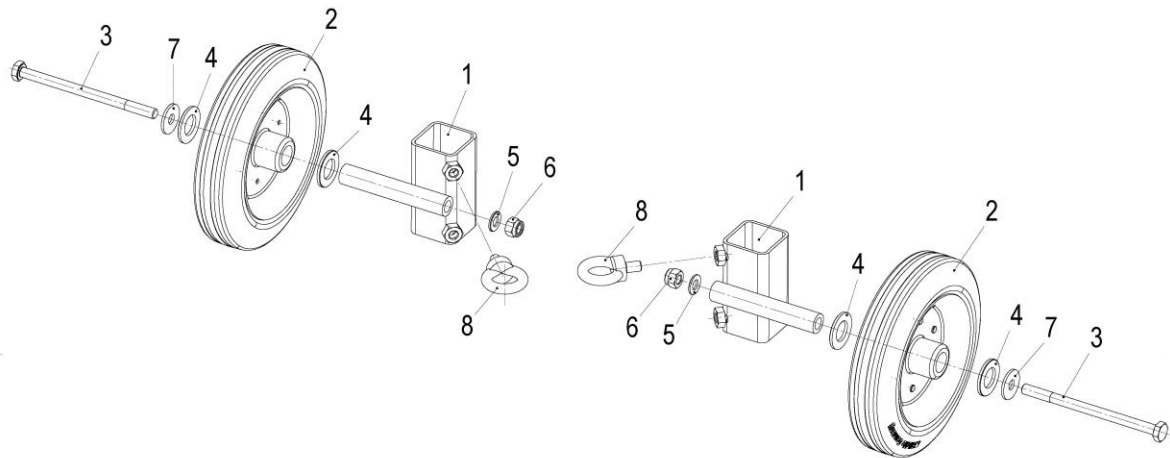
Pos.	Art.-Nr.	Qty.	Norm / Info	Content	Bezeichnung	Description	Désignation
-	0289 350 3900	1		Pos. 1-13	Rollenausleger kpl.	Roller table complete	Table à rouleaux complète

#### Contents of spare parts package

Pos.	Art.-Nr.	Qty.	Norm / Info	Bezeichnung	Description	Désignation
1	0289 350 3900	1		Rollenausleger	Roller table	Table à rouleaux
2		2		Standbein	Main pillar	Jambe de pivot
3		5		Rollen	Roll	Galet
4		2	A8,4 ISO 7089	Scheibe	Washer	Rondelle
5		2	A8 DIN 127	Federring	Spring washer	Rondelle-ressort
6		2	M8x50 ISO 4017	Schraube	Screw	Vis
7		2	M8x30	Sterngriffschraube	Star grip screw	Poignée-étoile
8		2		Druckplatte	Pressure plate	Estampe
9		2		Gummiplatte	Rubber plate	Plaque élastique
10		2		Ausgleichschraube	Adjusting screw	Vis de réglage
11		2	M8x16	Sterngriffschraube	Star grip screw	Poignée-étoile
12		10	Ø25	Stopfen	Stopper	Bouchon
13		2		Gummiplatte	Rubber plate	Plaque élastique



## 12.4.2 Transport wheelset Support leg



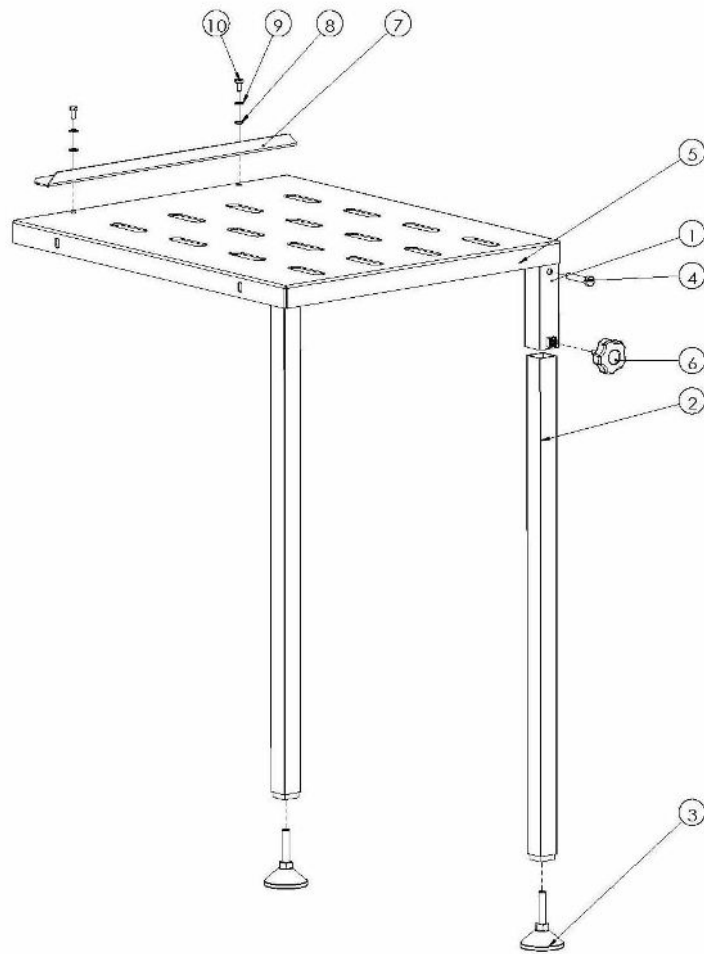
### Order as spare parts package

Pos.	Art.-Nr.	Qty.	Norm / Info	Inhalt	Bezeichnung	Description	Désignation
-	0289 350 9089	1		Pos. 1-8	Radsatz kompl.	Wheel set	Ensemble de roues

### Content spare parts list

Pos.	Art.-Nr.	Qty.	Norm / Info	Bezeichnung	Description	Désignation
1	0289 350 9089	2		Radsatz Schweißgruppe	Wheel set welding group	Ensemble de roues Groupe de soudage
2		2	Ø200xØ20x60	Transportrad	Transport wheel	Roue de transport
3		2	M10x150 ISO 4014	Schraube	Screw	Vis
4		4	B21 ISO 7090	Scheibe	Washer	Rondelle
5		2	B10,5 ISO 7090	Scheibe	Washer	Rondelle
6		2	M10 ISO 7040	Mutter	Nut	Ecrou
7		2	B10,5 ISO 7093	Scheibe	Washer	Rondelle
8		2	M10 DIN580	Ringschraube	Eyebolt	Boulon oculaire

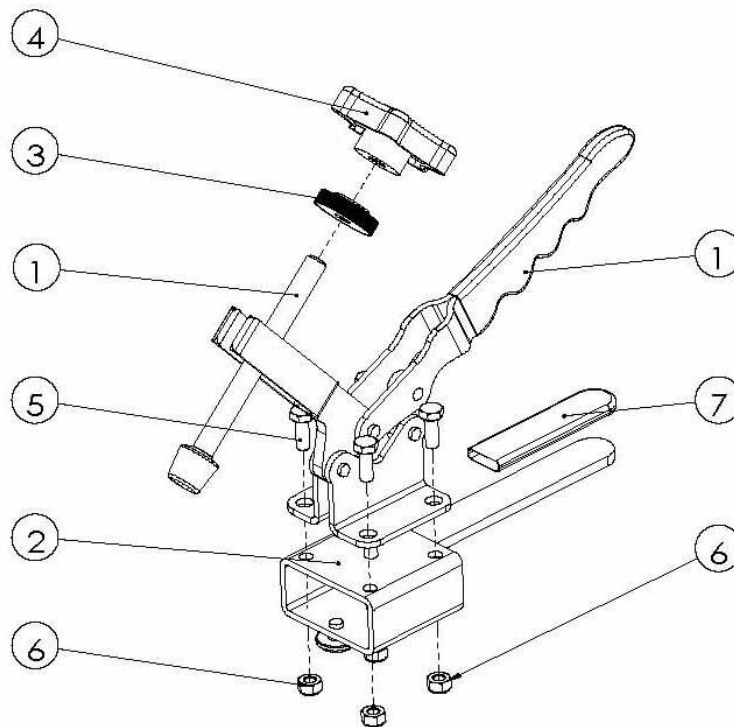
12.4.3 Lateral jib



Available as spare parts package							
Pos.	Art.-Nr.	Qty.	Norm / Info	Content	Bezeichnung	Description	Désignation
-	0289 250 9017	1		Pos. 1-10	Seitlicher Ausleger kpl.	Lateral extension complete	Table latérale complète

Contents of spare parts package						
Pos.	Art.-Nr.	Qty.	Norm / Info	Bezeichnung	Description	Désignation
1	0289 250 9017	1		Auflagetisch	Supporting table	Table de support
2		2		Standbein	Main pillar	Jambe de pivot
3		2		Verstellbare FüÙe	Adjustable levelling feet	Pied ajustable
4		2	M8x45 ISO 4017	Schraube	Screw	Vis
5		2	M8 ISO 7040	Mutter	Nut	Écrou
6		2	M8x16	Sterngriffschraube	Star grip screw	Poignée-étoile
7		1		Halblech	Holding plate	Cadre support
8		2	A6,4 ISO 7089	Scheibe	Washer	Rondelle
9		2	A6 DIN 127	Federring	Spring washer	Rondelle-ressort
10		2	M6x12 ISO 4017	Schraube	Screw	Vis

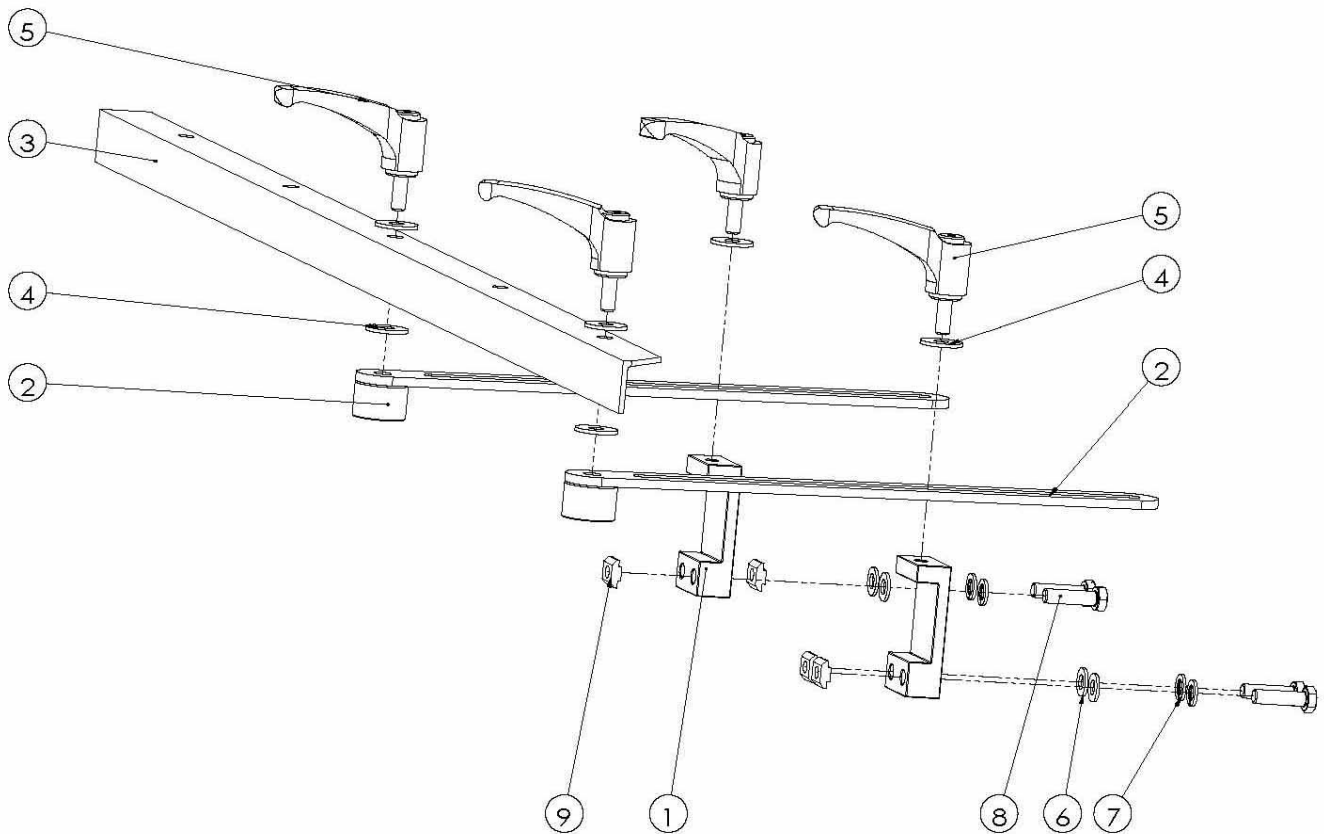
## 12.4.4 T-Lock tile clamping device



Available as spare parts package							
Pos.	Art.-Nr.	Qty.	Norm / Info	Content	Bezeichnung	Description	Désignation
-	0289 250 9018	1		Pos. 1-7	T-Lock Fliesen-Klemm-Vorrichtung kpl.	T-Lock tile clamp complete	Pince à dalles T-Lock complète

Contents of spare parts package							
Pos.	Art.-Nr.	Qty.	Norm / Info	Bezeichnung	Description	Désignation	
1	0289 250 9018	1		Klemme 1	Clamp 1	Pince 1	
2		1		Klemme 2	Clamp 2	Pince 2	
3		1		Scheibe	Washer	Rondelle	
4		1		Sterngriffschraube	Star grip screw	Poignée-étoile	
5		4	M6x16 ISO 4017	Schraube	Screw	Vis	
6		4	M6 ISO 7040	Mutter	Nut	Écrou	
7		1		Griffhülse	Insulated handle sleeve	Couche de protection de la poignée	

### 12.4.5 Tile stop



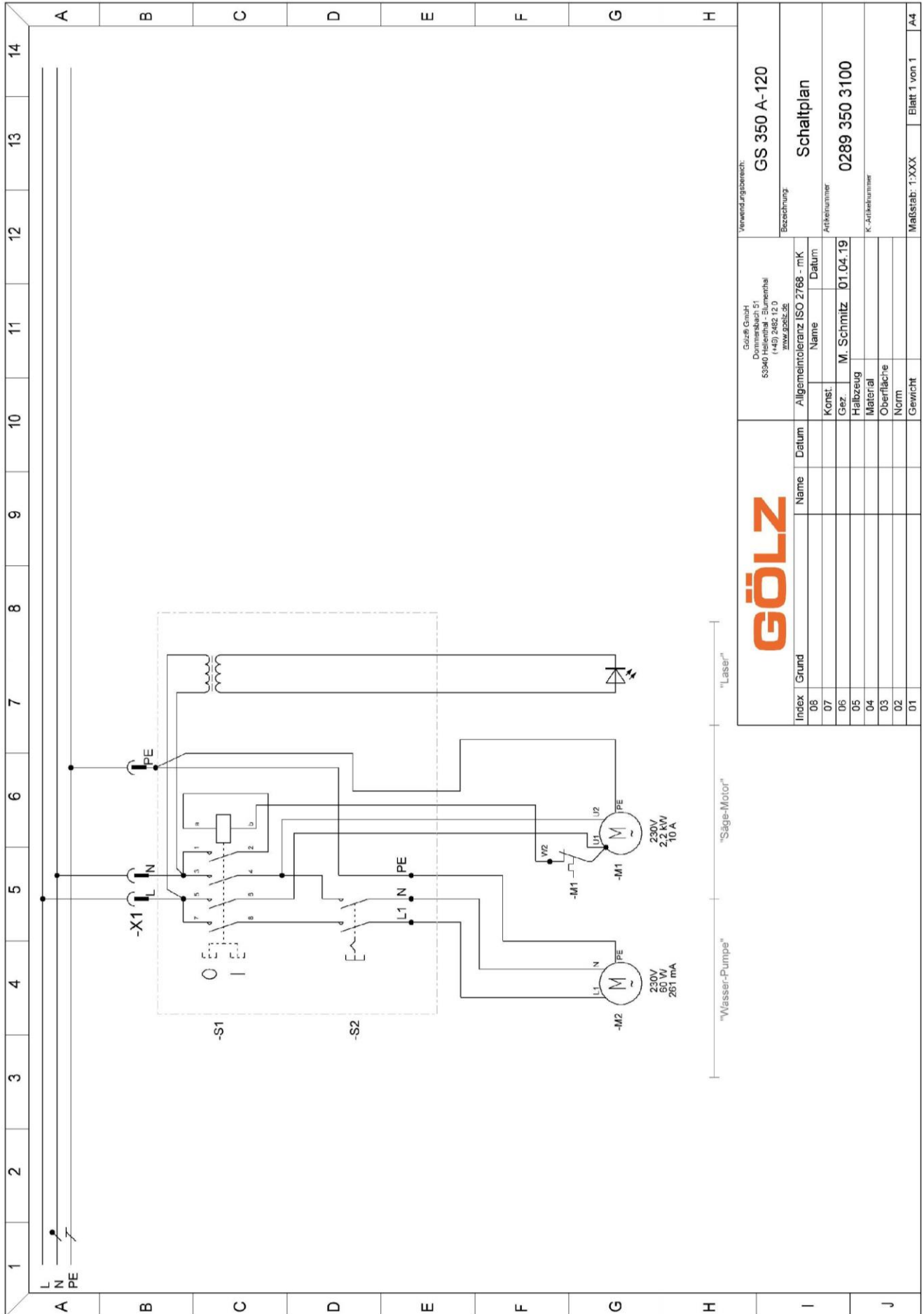
#### Available as spare parts package

Pos.	Art.-Nr.	Qty.	Norm / Info	Content	Bezeichnung	Description	Désignation
-	0289 250 9019	1		Pos. 1-9	Fliesenanschlag	Long guider	Buttée d'arrêt

#### Contents of spare parts package

Pos.	Art.-Nr.	Qty.	Norm / Info	Bezeichnung	Description	Désignation
1	0289 250 9019	2		Acceptance	Logement	Aufnahme
2		2		Langlochplatte	Long hole plate	Plaque de guidage
3		1		Lineal	Rule	Règle
4		6	8,4 ISO 7093	Scheibe	Washer	Rondelle
5		4	GN602-78-M8-20-SW	Klemmhebel	Clamp lever	Levier de serrage
6		4	A8,4 ISO 7089	Scheibe	Washer	Rondelle
7		4	A8 DIN 127	Federring	Spring washer	Rondelle-ressort
8		4	M8x30 ISO 4017	Schraube	Screw	Vis
9		4	M8	Mutter	Hexagonal spacer	Entretoise hexagonale

## 13 Wiring diagram



Verwendungsbereich:		GS 350 A-120	
Bezeichnung:		Schaltplan	
Gözl® GmbH Dommslabach 51 53940 Hellenthal - Blumenthal (+49) 2462 12 0 info@gözl.de		Artikelnummer 0289 350 3100	
Allgemeintoleranz ISO 2768 - mK		K-Artikelnummer	
Name		Datum	
Konst.		M. Schmitz	
Gez.		01.04.19	
Halbzeug			
Material			
Oberfläche			
Norm			
Gewicht			
Maßstab: 1:XXX		Blatt 1 von 1	
Index		Grund	
08			
07			
06			
05			
04			
03			
02			
01			

"Wasser-Pumpe"		"Säge-Motor"		"Laser"	
----------------	--	--------------	--	---------	--

**EU conformity declaration****GÖLZ® GmbH**

Dommersbach 51  
D-53940 Hellenthal  
Deutschland

declares under sole responsibility that

<b>Model:</b>	<b>Bridge Saw</b>
<b>Make:</b>	<b>GÖLZ</b>
<b>Type:</b>	<b>GS350A-120</b>

comply with the relevant provisions of the Directives

<b>2006/42/EC</b>	<b>Machinery directive</b>
<b>2014/30/EU</b>	<b>Electromagnetic compatibility</b>
<b>2014/35/EU</b>	<b>Low Voltage</b>
<b>2005/88/EC</b>	<b>Noise emission</b>
<b>2012/19/EU</b>	<b>Electrical and electronic waste</b>

and has been developed and fabricated in compliance with the following standards valid as at the production date:

<b>DIN EN 12418:2010-03</b>	<b>Masonry and stone cutting-off machines for job site - Safety</b>
<b>DIN EN ISO 12100:2011-03</b>	<b>Safety of machinery - General principles for design</b>
<b>DIN EN ISO 13849-1:2016-06</b>	<b>Safety of machinery - Safety-related parts of control systems</b>
<b>DIN EN 61000-3-2:2015-03; VDE 0838-2:2015-03 DIN EN 61000-3-11:2001-04; VDE 0838-11:2001-04</b>	<b>Electromagnetic compatibility (EMC)</b>
<b>DIN EN 55014-1:2012-05; VDE 0875-14-1:2012-05 DIN EN 55014-2:2016-01; VDE 0875-14-2:2016-01</b>	<b>Electromagnetic Compatibility</b>
<b>DIN EN 60204-1; VDE 0113-1:2007-06</b>	<b>Safety of machinery - Electrical equipment of machines</b>

Technical documentation kept by:

**GÖLZ® GmbH**

Development and design

Year of construction and machine number are indicated on the unit.

Hellenthal, 19.03.2019  
GÖLZ® GmbH

Managing Director  
Bernd Schmitz